



 **TRANSTECH GROUP**

Proven Performance By Design.

TRANSTECH CORE VALUES

The TransTech Way: We define our success by how we impact the lives of the people around us, our Team Members, our Customers, our Supply Partners, and our Communities.



TRANSTECH GROUP PORTFOLIO



TransTech provides **custom-engineered and fabricated solutions for liquids and gas processing, storage, transfer, and utilization** across a broad range of industries. With in-house engineering, fabrication, construction, and field services expertise, we've delivered service excellence and an unwavering commitment to quality and safety for over six decades.



Bendel **custom designs and fabricates virtually all types of shell & tube heat exchangers, ASME pressure vessels, reactors, distillation columns and towers, and API storage tanks** for specialty chemical, petrochemical, biofuels, biogas, food & beverage, pharmaceutical, and other process manufacturing industries.



Metalforms delivers **custom-engineered Shell & Tube Heat Exchangers, ASME Pressure Vessels, and 24 /7 maintenance and repair services—including emergency response**—for the world's largest refining and petrochemical companies.



Built on some of the most trusted heat-transfer brands, including BROWN FINTUBE® and TWISTED TUBE® Heat Exchanger Technology, Metalforms **produces heat transfer technologies designed to reduce energy costs, emissions, maintenance requirements, eliminate flow-induced vibrations, and improve thermal efficiency.**



MIG provides **specialized cryogenic and mechanical services for air separation/cryogenic systems, industrial process piping fabrication, installation, construction, maintenance, and confined space rescue** for air separation, wastewater/water treatment, food and beverage, pharmaceuticals, chemical, and other process industries.



Cryogenic Technology Resources specializes in the **design, fabrication, installation, service, and repair of cryogenic and high-pressure gas bulk storage and transfer solutions, cylinder filling systems, and advanced automation and control technologies**



ESI **delivers end-to-end solutions for biogas and RNG utilization**, including development assistance, engineering, process & control, SCADA, procurement, construction, operations, and maintenance.



TRANSTECH GROUP DIVISIONS

Engineered Products

TRANSTECH FABRICATION

Engineering, and custom fabrication of ASME pressure vessels, storage tanks, and process piping for energy and industrial applications

METALFORMS

Custom design fabrication and repair of shell and tube heat exchangers and ASME pressure vessels



Custom design and fabrication of ASME pressure vessels, storage tanks, and heat exchangers for process industries

METALFORMS HEAT TRANSFER

Custom heat exchanger solutions for energy efficiency and facility throughput



Engineered industrial gas and cryogenic equipment solutions and services

Services

TRANSTECH ENERGY

Turnkey design, fabrication, and installation of storage, transfer, and utilization solutions for liquefied gases

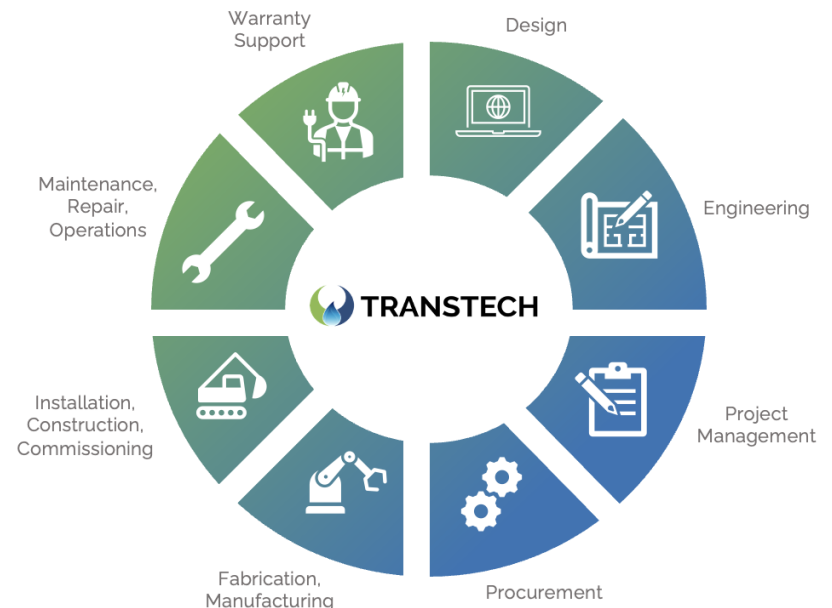


Cryogenic and mechanical services for critical infrastructure for air separation and process industries



Engineering, procurement, construction, operation & maintenance for Biogas-to-energy/RNG

Our integrated capabilities enable world-class projects that reduce risk and improve performance across the plant lifecycle—lowering costs & maximizing ROI.



TRANSTECH GROUP BY THE NUMBERS

Enhancing performance, reliability, continuous improvement & ROI through effective project delivery.



Industries

- Energy
- Renewables
- Industrial
- Process Manufacturing
- Refining
- Petrochemical
- Specialty Chemical
- Air Separation
- Cryogenics



Workforce

- 700+** Employees
- 130+** Dedicated field services team members
- 60+** Engineers
- 220+** Welders, Fabricators, Quality Inspectors



Capital Assets

- 540,000 ft²** Fabrication Capacity
- 165+** Acres of Vessel & Equipment Storage/Staging
- 8** State-of-the-Art Fabrication Facilities



Locations

13 Company Locations:

- McGregor, TX
- Cypress, TX
- Houston, TX
- Beaumont, TX
- Charlotte, NC
- Rocky Mount, NC
- Wilmington, NC
- Rock Hill, SC
- Indianapolis, IN
- Cleveland, OH
- Missoula, MT
- Denver, CO
- Sisters, OR

Customers

- Owner Operators
- EPCs
- Investors & Developers
- Municipalities

Our Expertise

- Development Support
- Engineering
- Fabrication
- Construction/Management
- MRO Services

Certifications

- ASME, U, U2, U3, S
- NBIC
- TEMA Class R, C, B
- API 660, 650, 620
- NACE
- CSR, SPRAT



TRANSTECH GROUP AT A GLANCE

Integrated, Best-in-Class Capabilities:
TransTech's ONE SOLUTION Simplicity

Reduce
Risk

- > Over **five decades of experience** behind every engagement
- > Enterprise-wide **Goal Zero Safety** drives the highest safety standards in the industry
- > **Industry leading QC/QA standards** ensure superior project delivery

Maximize
Uptime

- > **24-7 Emergency Repair**
- > In-house **Confined Space Rescue & Rope Access teams** support faster turnarounds
- > **Superior quality products** are built for performance & efficiency

Increase
ROI

- > Outstanding engineering & design ensure **peak performance while minimizing downtime.**
- > Nationwide fabrication facilities **support parallel job execution—and accelerate project delivery**
- > Streamlined, end-to-end solutions **improve efficiency and reduce project cycles.**

End-to-End Solutions Across the Plant Lifecycle

Engineered Equipment Fabrication

ASME
U, U2, U3, & S

NBIC
R-Stamp

TEMA
Class R, C, & B

API
660, 650, & 620

Specialized Mechanical Services

MRO
Solutions

Mechanical
Services

Repair &
Replacement

Process
Piping & Tubing

Energy Solutions

Storage Tanks
& Equipment

Gas & Liquids
Bulk Plants

Gas & Liquids
Terminals

Industrial Fuel &
Power Generation

Renewables Solutions

Development
Support

EPC Services,
Fabrication, O&M,
Process & Control,
SCADA

Biogas Processing &
Utilization:
AD, ADTE, LFG, LFGTE,
RNG

Renewable Fuels,
Renewable Diesel,
H₂, rLPG, rLNG,
rCNG

Cryogenics Solutions

ASU Construction,
Commissioning,
Maintenance,
Repair & Operations

Cryogenic Tanks,
Vessels & Equipment,
Fabrication, Installation &
Repair; ASU & CO₂
Plant Relocation

BAHX & Cold Box
Installation,
Maintenance,
& Repair

Industrial Gas Bulk Plant
Solutions, Automation &
Control Technologies

Heat Transfer Solutions

Thermal Design &
Engineering

Shell & Tube, Hairpin,
Twisted Tube® Heat
Exchangers

Aftermarket
Parts/Bundles

24-7 Maintenance &
Repair Services



NATIONAL FOOTPRINT



ENGINEERED EQUIPMENT FABRICATION

- ASME Section VIII, Division 1, 2, 3 Certifications
- API 660, 650, 620
- TEMA
- NBIC R-Stamp
- NFPA 58
- NFPA 22

Gas Processing

- Custom ASME Process Vessels
- Heat Exchangers
- Distillation Columns & Towers
- Reactors
- Separator Vessels
- Slug Catchers- Vessel & Harp
- Free Water Knockout Vessels
- Contactor & Absorber Vessels
- Mol Sieve Vessels



Storage, Transfer & Utilization

- Custom ASME Pressure Vessels
- NGL/LPG Storage Bullets
- Cryogenic Storage Tanks
- Large Diameter Vessels
- API 620 & 650 Tanks
- Process Piping
- Gas & Liquid Transfer Equipment
- Cryogenic Transfer Equipment
- Transloading skids



Process Manufacturing

- Shell & Tube, Hairpin, Twisted Tube® Heat Exchangers
- Distillation Towers & Columns
- Reactors
- Custom ASME Pressure Vessels
- API 620 & 650 Tanks
- Mix Tanks
- Process Piping
- Vessel. & Tank Repair/Retrofit



SPECIALIZED MECHANICAL SERVICES

- Nationwide Footprint
- Comprehensive Maintenance Solutions
- Equipment Repair & Overhaul
- Plant Upgrades & Modernization
- Installation & Construction
- Welding & Fabrication
- Safety, Compliance, Inspection, & Testing
- Project Management
- Emergency Response Services
- Shutdown & Turnaround Services
- Energy Efficiency & Environmental Services
- Electrical & Instrumentation Services

Plant & Facility Services

- Custom ASME fabrication
- Tank & Equipment Installation
- Logistic Coordination
- Equipment/Skid Packaging
- Process Piping
- Preventative Maintenance
- Start-up, Commissioning, & Training
- Code Compliance



Cryogenic & Mechanical Services

- Air Separation Equipment Installation, Maintenance, Repair, & Plant Relocation Services
- BAHX Maintenance & Repair
- Cold Box Maintenance & Repair
- Preventative Maintenance
- Process Piping & Tubing
- Aluminum Welding, WPS, PQR, & Charpy Certified



Specialty Services

- Confined Space Rescue
- Suspended Rope Access
- Emergency Services
- O2 Cleaning
- Clean-In-Place/CIP
- Ultra High Purity (UHP)
- On-site CSR & Rope Access Training Center
- 24/7 HX Turnaround/Shutdown



ENERGY INFRASTRUCTURE

- NGL, Propane, Butane & LNG
- Pressurized & Cryogenic Storage
- Design, Engineering, Construction
- ASME Vessel Fabrication
- New & Used Tank Inventory
- Modular Transfer Skid Solutions
- Process Piping Systems
- Vaporization/Regasification Equipment
- Permitting & Logistics
- Installation and Construction
- Commissioning & Startup
- Ongoing Maintenance & Repairs
- In-field Consultative Trouble Shooting
- Training

Bulk Storage

- Engineering, Installation & Construction Services
- Project Management
- NGL/LPG/LNG Storage Tanks
- Transfer Equipment Skids
- New & Used Tank Inventory
- Custom ASME Tank Fabrication
- Storage & Handling Skids
- Modular Tank Skids & Portapacs



Distribution Terminals

- Engineering, Installation & Construction Services
- Project Management
- Rail, Truck, Pipeline, Import/Marine Terminals
- Transloading Terminals
- Power Generation Fuel Infrastructure
- Off-grid Critical Fuel Supply



Power Gen & Industrial Fuel

- LPG Power Generation
- LNG Power Generation
- Co-Generation/CHP
- Industrial Fuel Supply
- Baseload Fuel Solutions
- Standby & Peak Shaving System
- Startup & Maintenance
- LPG/Propane, Butane, SNG, LNG, CNG, & RNG



RENEWABLES INFRASTRUCTURE

- Project Development Support
 - Feasibility Studies & Permitting
 - Engineering, Technology Specification, Procurement
 - Construction Management
 - Operations & Maintenance
 - LFG Collection & Control
- Process, Controls, SCADA Design
 - LFG Beneficial Use Solutions
 - Renewable Natural Gas
 - Biogas-to-Energy
 - Anaerobic Digestion
 - Power Generation
 - Water/Wastewater Treatment

LFG Collection & Control

- Landfill Gas Projection Modeling
- LFG Utilization and GCCS Feasibility Consulting
- Gas Collection & Control Design
- Well Field & Header Design
- Leachate Pump System Design
- Well Field Expansions
- PLC Controls Programming
- Operations & Maintenance



Biogas to RNG

- Development Support Consulting, Engineering
- Biogas Upgrading Technology Specification & Procurement
- Construction Management
- Electrical, Process Controls & SCADA Design & Integration
- 24/7 Operations & Maintenance
- Virtual Pipeline Management



Biogas-to-Energy

- Biogas Processing System Engineering & Design
- Digester Gas Treatment Systems
- Flare Station Design & Expansion
- Construction Management
- Gas Engine/Turbine Integrations
- Heat Recovery/CHP
- Balance of Plant
- 24/7 Operations & Maintenance

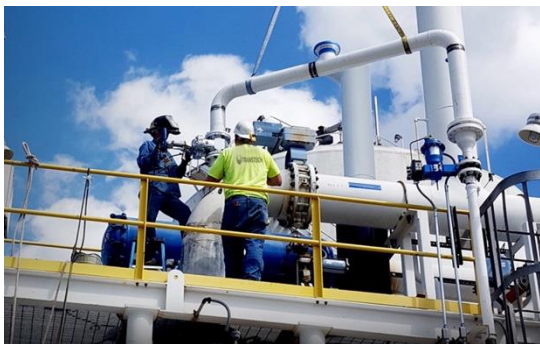


CRYOGENICS INFRASTRUCTURE

- Cryogenic Industrial Services
- Air Separation Equipment Installation, Maintenance, Repair, & Plant Relocation Services
- Cold Box Installation, Maintenance, & Repair
- BAHX Installation, Maintenance, & Repair
- Cylinder Filling Systems, and Advanced Automation & Control Systems
- Cryogenic Storage Tank & Trailer Repair- LNG, CO₂, LIN, LOX, N₂
- Cryogenic Transfer Equipment Fabrication/Packaging
- Process Piping & Tubing

Air Separation

- Process Piping Fabrication
- Tanks, Vessels, & Equipment
- Installation & Construction
- Plant Upgrades & Turnarounds
- Electrical & Process Controls
- Oxygen Cleaning Services
- Welding & Fabrication
- Pressure Testing



Cryogenic Fabrication

- Design & Fabrication Industrial Gas Filling Solutions
- R-Stamp Repair & Modification - Shop & Field
- On-site NDE (RT, PAUT, & PT)
- UHP & Sanitary Piping Cleaning/Fabrication/Installation
- Aluminum, Monel, Cryogenic, Carbon, Stainless, Nickel Alloys



Cryogenic Services

- Field-based new Cold box installations and relocation
- Cold box & BAHX repair & maintenance services
- Process piping design, fabrication, installation & repair
- Planned maintenance & turnarounds
- Emergency response



HEAT TRANSFER SOLUTIONS

- Custom Shell & Tube Heat Exchangers
- BROWN FINTUBE® Hairpin Heat Exchangers
- TWISTED TUBE® Heat Exchanger Technology
- ALCO Products® Hairpin Heat Exchangers
- BOS-HATTEN® Heat Exchangers
- Industrial Process, Refining & Petrochemical, Oil & Gas
- 24/7 Turnaround Services
- Strip and Retube Services
- Inspection and Testing
- Hairpins: Double Pipe and Multitube
- Tank Heaters
- Enhancement Devices

New Heat Exchangers

- Thermal & Mechanical Design
- Fixed, & Floating Tube sheet, U-Tube
- TEMA Standards
- ASME Section VIII, Division 1
- Wide Variety of Materials, From Carbon Steel to High Alloys



Aftermarket Parts, Bundles, & Replacements

- Repair, Replacement, & Maintenance
- Facility Surveys
- Twisted Tape Tube Inserts
- Wire-wrapped Core Tube Inserts
- LOK-BAFFLE® Tube Support Baffles
- Extended Fin Surfaces



Services

- 24/7 Turnaround Services
- Strip & Retube Services
- R-Stamp Repair, Replacement, & Maintenance
- Re-Rate & Modification
- Machining & Drilling



A FEW OF OUR CUSTOMERS

