



FABRICATION SOLUTIONS

Energy, Chemical, & Industrial Markets



TransTech Energy + Bendel Tank & Heat Exchanger + Metalforms + Maddox Industrial Group + ESI

Houston, TX + McGregor, TX + Beaumont, TX + Charlotte, NC + Indianapolis, IN + Sisters, OR + Rocky Mount, NC + Missoula, MT + Cleveland, OH

A low-angle, upward-looking photograph of a complex industrial facility, likely a refinery or chemical plant. The image shows several tall, cylindrical distillation columns and a dense network of pipes, walkways, and structural steel. The sky is blue with scattered white clouds. The entire image has a semi-transparent blue overlay, which serves as a background for the text.

The TransTech Difference

Through our integrated solutions, nationwide resources, and expert teams, we consistently deliver outstanding results that surpass expectations.

Enhancing performance, reliability, continuous improvement & ROI through effective project delivery.



Industries

- Energy
- Renewables
- Industrial
- Process Manufacturing
- Petrochemical/Chemical
- Air Separation
- Cryogenics



Workforce

- 520+** Employees
- 130+** Dedicated field services team members
- 45+** Engineers
- 200+** Welders, Fabricators, Quality Inspectors



Capital Assets

- 450,000 ft²** Fabrication Capacity
- 150+** Acres of Vessel & Equipment Storage/Staging
- 6** State-of-the-Art Fabrication Facilities



Locations

11 Company Locations:

- Rocky Mount, NC
- Charlotte, NC
- Wilmington, NC
- McGregor, TX
- Houston, TX
- Beaumont, TX
- Indianapolis, IN
- Cleveland, OH
- Missoula, MT
- Denver, CO
- Sisters, OR

Customers

- Owner Operators
- EPCs
- Investors & Developers
- Municipalities

Our Expertise

- Development Support
- Engineering
- Fabrication
- Construction/Management
- MRO Services

Certifications

- ASME, U, U2, U3, S
- NBIC
- TEMA Class R, C, B
- API 660, 650, 620
- NACE
- CSR, SPRAT



Integrated, Best-in-Class Capabilities: TransTech's ONE SOLUTION Simplicity

Reduce Risk

- > Over **five decades of experience** behind every engagement
- > Enterprise-wide **Goal Zero Safety** drives the highest safety standards in the industry
- > **Industry leading QC/QA standards** ensure superior project delivery

Maximize Uptime

- > **24-7 Emergency Repair**
- > In-house **Confined Space Rescue & Rope Access teams** support faster turnarounds
- > **Superior quality products** are built for performance & efficiency

Increase ROI

- > Outstanding engineering & design ensure **peak performance while minimizing downtime.**
- > Nationwide fabrication facilities **support parallel job execution—and accelerate project delivery**
- > Streamlined, end-to-end solutions **improve efficiency and reduce project cycles.**

End-to-End Solutions Across the Plant Lifecycle

Fabrication			
ASME U, U2, U3, & S	NBIC R-Stamp	TEMA Class R, C, & B	API 660, 650, & 620
Industrial Services			
MRO Solutions	Mechanical Services	Repair & Replacement	Process Piping & Tubing
Energy Solutions			
Storage Tanks & Equipment	Gas & Liquids Bulk Plants	Gas & Liquids Terminals	Industrial Fuel & Power Generation
Renewables Solutions			
Development Support	EPC Services, Fabrication, O&M, Process & Control, SCADA	Biogas Processing & Utilization: AD, ADTE, LFG, LFGTE, RNG	Renewable Fuels, Renewable Diesel, H2, rLPG, rLNG, rCNG
Cryogenics Solutions			
ASU Construction, Commissioning, Maintenance, Repair, Operations	Cryogenic Tanks, Vessels & Equipment, Fabrication, Installation & Repair; ASU & CO2 Plant Relocation	BAHX & Cold Box Installation, Maintenance, & Repair	Alternative Fuel Infrastructure Solutions for LPG, LNG, H2
Specialized Services			
O2 Cleaning	Rope Access	Confined Space Rescue	24-7 Emergency Response



TransTech provides custom-engineered and fabricated **solutions for liquids and gas processing, storage, transfer, and utilization** across a broad range of industries. With in-house engineering, fabrication, construction, and field services expertise, we've delivered service excellence and an unwavering commitment to quality and safety for over six decades.



Bendel **custom designs and fabricates virtually all** types of shell & tube heat exchangers, ASME pressure vessels, reactors, distillation columns and towers, and API storage tanks for specialty chemical, petrochemical, biofuels, biogas, food & beverage, pharmaceutical, and other process manufacturing industries.



Metalforms delivers custom-engineered and fabricated Shell & Tube Heat Exchangers and ASME Pressure Vessels, along with a comprehensive array of maintenance, repair, and replacement services—including **24-7 emergency repair**—serving the largest refining and petrochemical companies in the world.



MIG provides **specialized cryogenic and mechanical services** for air separation/cryogenic systems, industrial process piping, fabrication, installation, construction, maintenance, confined space rescue for air separation, wastewater/water treatment, food and beverage, pharmaceuticals, chemical, and other process industries.



ESI **delivers end-to-end solutions for biogas and RNG** utilization, including development assistance, engineering, process & control, SCADA, procurement, construction, operations, and maintenance.



Beaumont, TX
 170,000 square foot
 fabrication facility
 Metalforms



McGregor, TX
 170,000 square foot
 fabrication facility
 TransTech Fabrication



Charlotte, NC
 65,000 square foot
 fabrication facility
 Bendel Tank & Heat
 Exchanger



Indianapolis, IN
 46,000 square foot
 fabrication facility
 Maddox Industrial Group



Rocky Mount, NC
 25,000 square foot
 fabrication facility
 TransTech Energy



Sisters, OR
 20,000 square foot
 fabrication facility
 ESI



ENERGY & INDUSTRIAL ENGINEERING, FABRICATION, SERVICES

TransTech is a specialty engineering, fabrication, construction, and services company delivering end-to-end project solutions across a broad array of industries. We help customers develop, manage, and maintain responsible, sustainable projects that drive measurable, positive impact while protecting workers, communities, and the environment.

TransTech's divisions include Energy, Fabrication, Services, Renewables, and Cryogenics, with a focus on gas and liquids processing, storage, transfer, and utilization.

TransTech's specialized teams work individually or jointly, based on customer needs, to deliver a broad array of engineering, fabrication, construction, maintenance, and operations projects nationwide and abroad.

***Where engineering
meets fabrication***



Capabilities

- ASME U, U2, U3, and S Certifications
- NBIC Certification - R-Stamp
- TEMA Class R, C & B
- APL-660, APL-650, APL-620
- NFPA-22

Materials

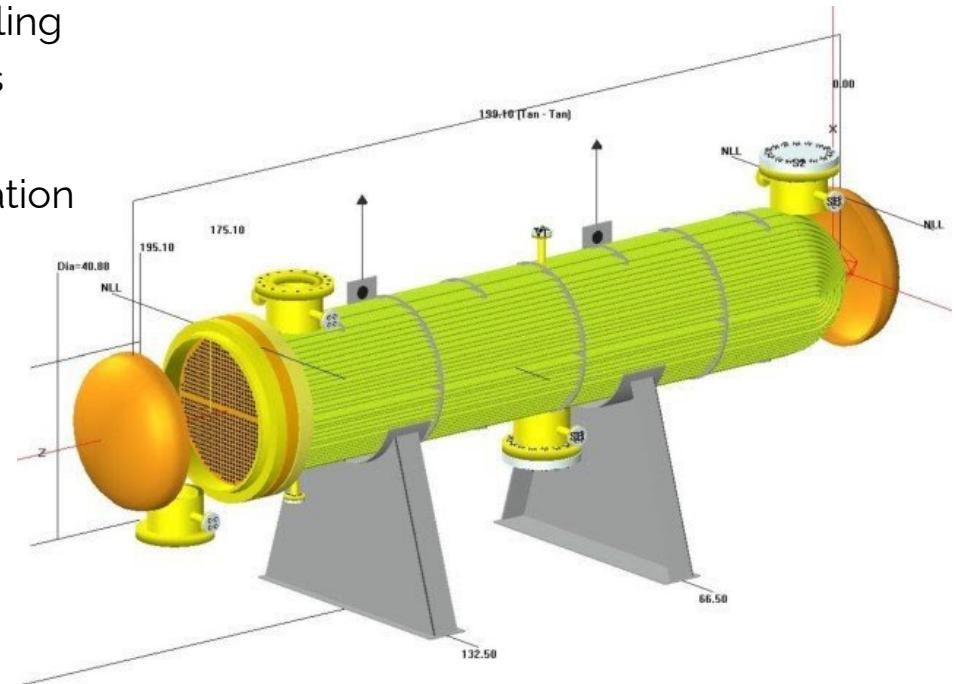
- Carbon Steel
- Austenitic Stainless Steel - 304, 310, 316L, 317L, 321, 347
- Super Austenitic Stainless Steel - ALLOY 20, 904L, AL6XN
- Duplex Stainless Steel - 2205, 2507
- HASTELLOY - C22, C276, C2000
- Other Nickel Alloys - Nickel 200/201, Monel 400
- Aluminum - 5083, 6061
- Superalloys - Inconel

Features

- Vessels of any Length-with thickness up to 5"
- Carbon & stainless steel
- Complex, high pressure, heavy wall
- Process internals specification and installation
- Pressure piping

Engineering & Design

- COMPRESS: Mechanical design of Pressure Vessels, Reactors, and Shell & Tube Heat Exchangers
- HTRI: Thermal analysis of Shell & Tube Heat Exchangers
- AME Tank - Rapid configuration, design, and detailing of above-ground API-650 & API-620 storage tanks
- CUSTOM "in-House" programs: Developed by our experienced engineering staff for the efficient creation of Bill of Materials and Customer Quotations
- Nozzle Pro for FEA
- Inventor
- AutoCAD Plant 3D





Custom Engineered & Fabricated

With decades of experience and industry leading pressure vessel and process equipment manufacturing capacity, we have the capability, expertise, and capacity to deliver virtually any processing solution your operations require, such as:

- Inlet Separators
- Slug Catchers (Harp & Vessel)
- Amine Contactors
- Mol Sieve Vessels
- Glycol Dehy Units
- Sulfatreat Vessels
- Process Columns & Towers
- Surge Drums
- ASME Bullet Storage Tanks (up to 120,000 gallons)





ASME Pressure Vessels

TransTech delivers the highest quality custom-built Pressure Vessels, built to meet your application requirements. Every vessel we build is engineered and fabricated in strict accordance with ASME Code. Available in Carbon Steel, Stainless Steel, Nickel Alloy and Duplex. Vessels can also include the following at your option:

- ASME U, U2, U3 Certifications
- Lethal Service
- Internal Coils
- Half-Pipe Jacket
- Dimple Jacket

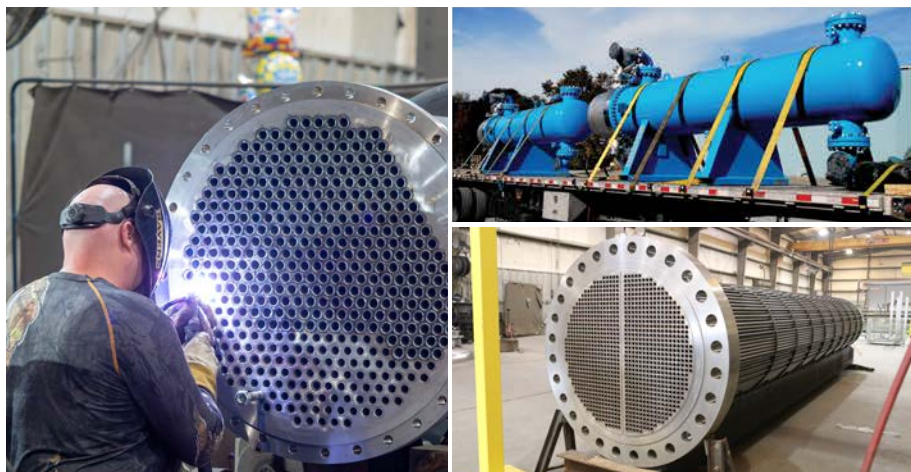


Columns & Towers

We deliver custom manufactured trayed and packed columns & towers built to your exact specifications. All our columns & towers are fabricated in strict accordance with ASME code and are available in Stainless Steel, Carbon Steel, Nickel Alloy, and Duplex, including:

- Adsorber Columns
- Amine Stills
- Condensate Stabilization
- Debutanizers
- Deethenizers
- Depropanizers
- Distillation Columns
- High Pressure Contactors
- Lethal Service Scrubbers
- Rectifying Columns
- Scrubber Columns
- Stabilizers
- Stripper Columns
- Vertical Absorbers





Heat Exchangers

TransTech is a leading provider of custom engineered and fabricated shell and tube heat exchangers including:

- Fixed tubesheet
- Floating tubesheet
- U-tube

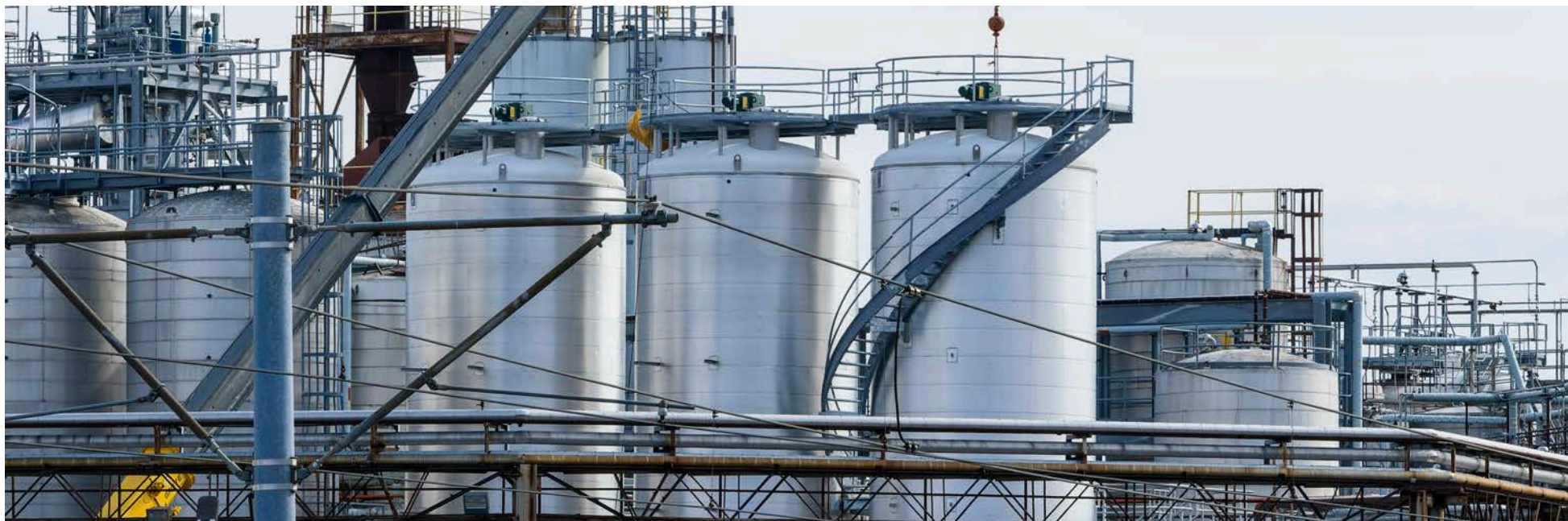
All our heat exchangers are designed to standard TEMA configurations and in accordance with ASME Code, Section VIII, Division 1; TEMA class R, C & B; and API-660. Our materials expertise includes: Stainless Steel, Carbon Steel, Nickel Alloy, Duplex.



Reactors

TransTech delivers custom manufactured Reactors built to your exact specifications. ALL our Reactors are engineered and fabricated in strict accordance with ASME code and are available in Stainless Steel Carbon Steel Nickel Alloy, and Duplex. Vessels can also include the following, at your option:

- ASME U, U2, U3 Certifications
- Low and High Pressure Designs
- Lethal Service
- Internal Coils
- Half-Pipe Jacket
- Dimple Jacket
- PMI - Positive Material Identification
- Pickling and Passivation
- PWHT & Stress Relieving

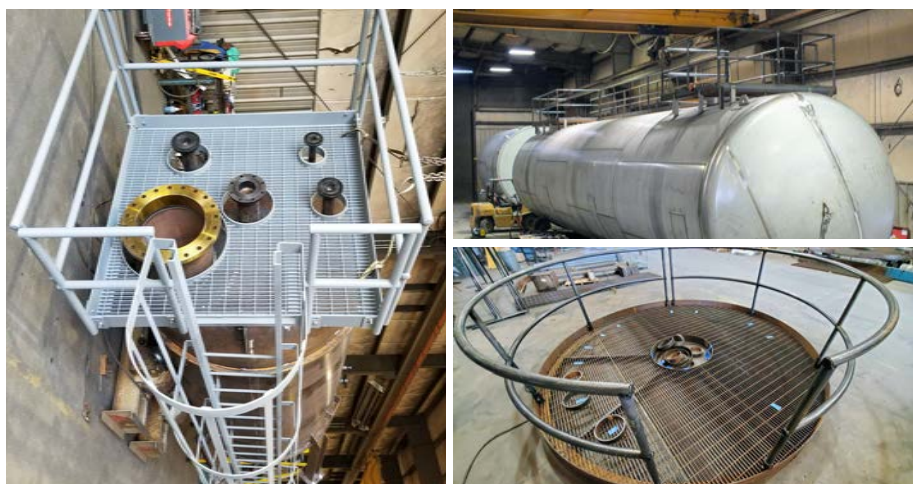


API-650 & API-620 Storage Tanks

TransTech manufactures the highest quality storage tanks, engineered and fabricated in accordance with **ASME, API-650, API-620, and UL-142 single and double wall** specifications.

Our unique manufacturing process allows us to seam weld plates up to 192" long with 100% X-ray quality, resulting in fewer circumferential welds and an overall superior product at the same or less cost than our competitors. Materials include:

- PWHT & Stress Relieving
- Internal Coils
- Half-Pipe Jacket
- Dimple Jacket
- Ladders & Platforms
- Insulation



Platforms & Ladders

TransTech offers outstanding quality custom-fabricated ladders, platforms and other systems for providing safe, convenient access to tanks, vessels and equipment as needed for day-to-day operations, maintenance and repair.

All our fabricated assemblies are purpose-built to your exact specifications, for indoor and outdoor applications, offering complete design flexibility and ensuring impeccable fit and compatibility with your facility and operations.



Large Diameter, Heavy Wall Vessels

Custom design and fabrication of large diameter, heavy wall, super capacity ASME code certified pressure vessels, serving clients in chemical, petrochemical, oil and gas, refining, and a wide variety of manufacturing industries. With sizes of up to 20 feet plus in diameter and weighing as much as 650,000 pounds and more we can also include the following, at your option:

- ASME "U" Stamp, Division 1, 2, and 3, and NBIC "R" Certificate
- Atmospheric, Low and high pressure designs
- Above ground and underground options





Services

- Logistics/Staging/Heavy Haul
- Tank/Equipment Set & Installation
- Commissioning & Startup
- R-Stamp Repair & Modification - Shop & Field
- In-field Maintenance & Upgrades
- In-field Consultative Trouble-Shooting
- Onsite Pneumatic & Hydrostatic Pressure Testing
- On-site NDE (RT & PAUT)
- Turnaround Services
- 24/7 Emergency Response Services
- Reliability Support for Air Separation
- Coldbox Troubleshooting, Leak Detection & Repair
- BAHX Troubleshooting & Repair
- Confined Space Entry & Rescue
- SPRAT - Rope Access
- Training



Installation and Field Services

From providing expert engineering assistance in specifying the correct size of tank piers and foundations to coordination of freight and offloading - through to site excavation and tank set, we can provide a complete, turnkey solution. We have decades of logistics and field service experience and can handle all the details of preparing, loading, permitting, shipping, and installing all your pressure vessels and equipment.

When you work with TransTech Energy, you can eliminate the need to source additional contractor services—and keep costly crane times to an absolute minimum. Let us provide you with one point of contact and one invoice.



CRYOGENIC INFRASTRUCTURE SOLUTIONS



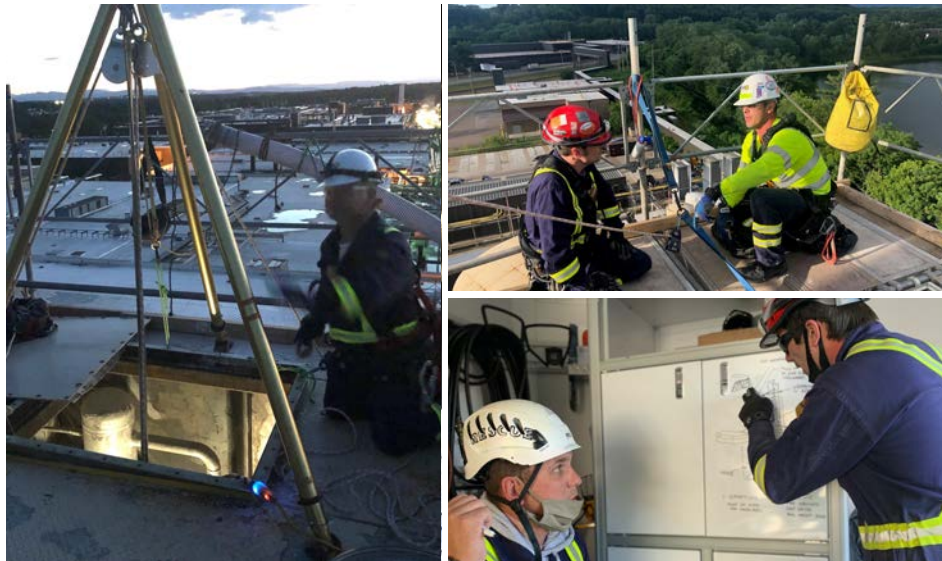
Cryogenic Gas Processing Services

We provide specialized services for essential industrial infrastructure. Gas Processing and Air Separation are a critical aspect of essential industries as it effects a wide variety of various industries (health, medical, manufacturing, energy, transportation, etc.). Maddox Industrial Group provides "turn key" services to the largest Industrial Gas and Gas Processing companies in the world. MIG provides:

- Full Service Mechanical Contractor
- PSA & VPSA
- Mol Sieve Repairs & Reloads
- Cold Box Trouble Shooting & Repair
- BAHX Repair / Alterations
- Oxygen Service Cleaning
- Pressure Vessel & Heat Exchanger 'R' Stamp Repairs / Alterations
- Plant Upgrades, Shutdowns, & Relocations
- Cryogenic Process Equipment Fabrication, Packaging, & Installation
- Cryogenic Storage Tanks
- Several WPS/PQS that include: SS, SS/CS, Aluminum, Charpy (cryogenic piping), Monel, Inconel
- Code Certified Welders
- Certified Riggers



SPECIALIZED SERVICES



Confined Space Rescue/Rope Access

Our team has extensive experience working inside boilers, tanks, columns, and process vessels and the need for a standby rescue team developed from this type of work. MIG Confined Space Rescue Team (CSRT) allows your company to put an emergency response plan in place to ensure the safety and health of your staff during critical emergency operations. Our industrial rescue services include:

- Emergency rescue teams
- Trained rescue personnel
- Confined Space training
- Standby rescue services
- Low angle rescue
- Confined Space entry
- Safety and rescue equipment rental

MIG keeps your employees safe by offering industrial rescue services that emphasize crisis avoidance and emergency training that is tailored to your company's specific needs.



Sandy Morris

Market Director - Oil, Gas, and Petrochemical
Energy Fabrication

O: 254-840-3355

M: 325-340-0216

sandy.morris@transtechenergy.com



Joe Schenberg

General Manager / Market Director
Bendel Tank & Heat Exchanger

M: 405-205-4079

jschenberg@bendel.com

jschenberg@transtechenergy.com