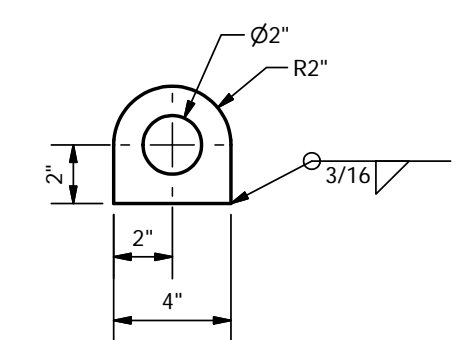
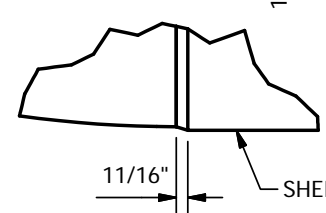
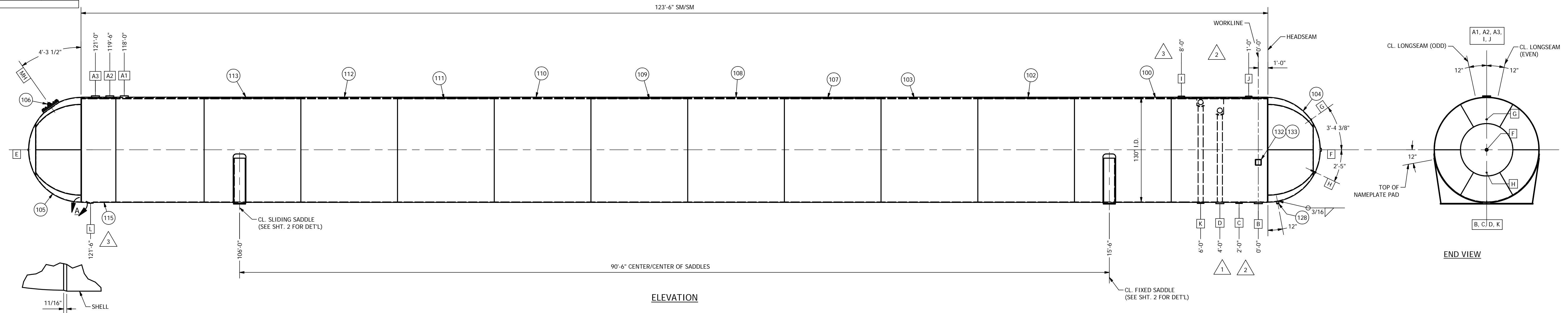


1	ADDED "K"	7/14/17
2	REV. PER CUST. COMMENTS	7/17/17
3	ADDED "L", MOVED "I"	7/19/17
REV	DESCRIPTION	DATE

NOTE: ALL DIM. ARE GIVEN FROM WORKLINE U.N.O.



WELD PROCEDURES	
JOINT DESCRIPTION	WELD PROCEDURE
SHELL LONGSEAM/ROUNDSEAM	A101016, A101012
STARTING HEAD TO SHELL	A101012 (L717960), S10C02 (8018C2)
CLOSING HEAD TO SHELL	A101012, S10C02
FITTINGS TO SHELL	F10111 (UC71)
FITTINGS TO HEAD & MANWAY	F10111
MISC.	F10113
SADDLES	F10111
SADDLE PAD TO SHELL	F10111
SADDLES	F1122, S1102

ITEM	QTY	DESCRIPTION	MATERIAL	STOCK NUMBER	DES
137	1	2\" 300# R.F. STUDDING OUTLET X 1 3/4\" MIN. THK.	SA-516 GR. 70		M
136	4	3\" 300# R.F. STUDDING OUTLET X 2\" MIN. THK.	SA-516 GR. 70N		
135	1	3\" STANDPIPE PER SHT. 3			
134	1	6\" STANDPIPE PER SHT. 3			
133	1	ABOVE GROUND NAMEPLATE	Stainless Steel		
132	1	1/4\" X 7 1/2\" PL. X 7 1/2\" LG.	SA-516 GR. 70		M
131	1	1\" 3000# THREADED HALF COUPLING	SA-105	1230-2	R
130	4	1/2\" X 13 3/8\" PL. X 20 5/16\" LG. (TRIM AS REQ'D)	SA-516 GR. 70		M
129	5	2 1/2\" THK. X 3 1/2\" I.D. X 10 1/2\" O.D.	SA-516-70N	13417	R
128	1	3/8\" PL. X 3\" X 3\"	SA-516 GR. 70	13420	M
127	1	1/2\" X 7\" LG. THERMOWELL	SA-105	1157-7	R
126	1	3/4\" 6000# THREADED FULL COUPLING	SA-105	1238-9	R
125	1	2 1/2\" 3000# THREADED HALF COUPLING	SA-105	1234-8	R
124	1	16\" 150# R.F. MANWAY W/ BLIND		17074	
123	1	1\" X 15\" PL. X 116\" LG. (SLOT PER DET'L)	SA-516 GR. 70		M
122	1	1\" X 15\" PL. X 116\" LG. (DRILL PER DET'L)	SA-516 GR. 70		M
121	4	1/2\" X 13 3/8\" PL. X 1 7/8\" LG. (TRIM AS REQ'D)	SA-516 GR. 70		M
120	4	1/2\" X 13 3/8\" PL. X 4 9/16\" LG. (TRIM AS REQ'D)	SA-516 GR. 70		M
119	4	1/2\" X 13 3/8\" PL. X 10 5/16\" LG. (TRIM AS REQ'D)	SA-516 GR. 70		M
118	4	5/8\" X 57 3/8\" PL. X 65 3/8\" LG. (CUT PER DET'L)	SA-516 GR. 70		M
117	4	1/2\" X 14\" PL. X 57 15/16\" LG. (TRIM AS REQ'D)	SA-516 GR. 70		M
116	2	1/2\" X 16\" PL. X 197 1/2\" LG. (ROLL TO 131 7/16\" I.D.)	SA-516 GR. 70		M
115	1	0.714 in X 43 1/2\" PL. X 410 3/4\" LG. (ROLL TO 130\" I.D.)	SA-612		M
114	1	0.714 in X 110 1/4\" PL. X 410 3/4\" LG. (ROLL TO 130\" I.D.)	SA-612		M
113	1	0.714 in X 120 3/4\" PL. X 410 3/4\" LG. (ROLL TO 130\" I.D.)	SA-612		M
112	1	0.714 in X 120 3/4\" PL. X 410 3/4\" LG. (ROLL TO 130\" I.D.)	SA-612		M
111	1	0.714 in X 120 3/4\" PL. X 410 3/4\" LG. (ROLL TO 130\" I.D.)	SA-612		M
110	1	0.714 in X 120 3/4\" PL. X 410 3/4\" LG. (ROLL TO 130\" I.D.)	SA-612		M
109	1	0.714 in X 120 3/4\" PL. X 410 3/4\" LG. (ROLL TO 130\" I.D.)	SA-612		M
108	1	0.714 in X 120 3/4\" PL. X 410 3/4\" LG. (ROLL TO 130\" I.D.)	SA-612		M
107	1	0.714 in X 120 3/4\" PL. X 410 3/4\" LG. (ROLL TO 130\" I.D.)	SA-612		M
106	1	3/8\" X 4\" PL. X 4\" LG. (CUT PER DET'L)	SA-516 GR. 70		M
105	1	.4275\" MIN. THK. X 144\" I.D. HEMI-HEAD PER SHT.		53503-8	M
104	1	.4275\" MIN. THK. X 144\" I.D. HEMI-HEAD PER SHT.		53503-7	M
103	1	0.714 in X 120 3/4\" PL. X 410 3/4\" LG. (ROLL TO 130\" I.D.)	SA-612		M
102	1	0.714 in X 120 3/4\" PL. X 410 3/4\" LG. (ROLL TO 130\" I.D.)	SA-612		M
101	1	0.714 in X 120 3/4\" PL. X 410 3/4\" LG. (ROLL TO 130\" I.D.)	SA-612		M
100	1	0.714 in X 120 3/4\" PL. X 410 3/4\" LG. (ROLL TO 130\" I.D.)	SA-612		M

CERTIFIED BY: _____

M.A.W.P. 250 P.S.I. AT +125 °F
M.D.M.T. +13 °F AT 250 P.S.I.

U L10618 SN YEAR 2017
W ABOVEGROUND

RT 1 HD. HEMI W.C. 90,000 GAL.
O.L. 1.614 IN. O.D. 131.428 IN.

SK THK. .714 IN. HD. .420 IN. IN. MIN.
SURF. AREA 4.629 SQ. FT.

COINCIDENT MDMT: -20°F @ 164 PSI
THIS CONTAINER SHALL NOT CONTAIN A PRODUCT THAT HAS A VAPOR PRESS. IN EXCESS OF 215 P.S.I.G. AT 100 °F

X-RAY	
JOINT DESCRIPTION	X-RAY
STARTING HEAD TO SHELL	FULL UW-11(a)/TYPE 1
SHELL LONG SEAMS	FULL UW-11(a)/TYPE 1
SHELL ROUND SEAMS	FULL UW-11(a)/TYPE 1
CLOSING HEAD TO SHELL	FULL UW-11(a)/TYPE 1

VESSEL DESIGN DATA & INSPECTION NOTES
CODE: 2015 ED. ASME, SECT. VIII, DIV. 1

CONSTRUCTION: WELDED

INTERNAL DESIGN PRESS: 250 PSIG @ +125 °F
EXTERNAL OPERATING PRESS: PSIG @ °F
INTERNAL DESIGN PRESS: PSIG @ °F
EXTERNAL OPERATING PRESS: PSIG @ °F
MAX. ALLOW. WORKING PRESS: 250 PSIG @ +125 °F
HYDROSTATIC TEST: 325 PSIG @ AMBIENT °F

SHELL THICKNESS: .714 NOM.
HEAD THICKNESS: .420 MIN.
CONE: NOM.
CORROSION ALLOWANCE: NONE
HEAT TREAT: NONE
X-RAY: RT 1
APPLY SYMBOL OR STAMP: PER ASME
INSPECTION: NATIONAL BOARD

GENERAL NOTES

- All bolts to straddle normal centerline unless otherwise noted.
- Vessel to be cleaned after testing.
- All openings are to be protected prior to shipment.
- Approximate weight 133,500 lbs.
- Welding procedures SEE ABOVE.
- A longitudinal & transverse workline to be stamped on vessel prior to layout of nozzles and attachments.
- Tolerances to be per _____ tolerance sheet
- All flanges to be ASME B16.5-2013.
All couplings to be ASME B16.11-LATEST EDITION.
All elbows to be ASME B16.9-LATEST EDITION
Flanges over 24\" to be ASME B16.47-2011"

SURFACE PREPARATION: EXTERIOR TO BE POWER TOOL CLEANED

PAINT: (1) COAT OF SHERWIN WILLIAMS MACROPOXY 646 EPOXY PRIMER

MARK	QUAN	SIZE	RAT	FAC	TYPE	SERVICE	NOZZLE OD	WALL THK.	PAD THK.	PAD WIDTH	OS PROJ	IS PROJ	WELD A	WELD B	WELD C	BEVEL	B.O.M. NUMBER	
MH	1	16"	150#	RF	STUDDING OUTLET	MANWAY W/BLIND	23.5"	3.75"					0"	3/8		7/16	FULL	124
L	1	2"	300#	RF	STUDDING OUTLET	DRAIN	6.5"	2.25"					0"	3/8		3/4	FULL	137
K	1	3"	300#	RF	STUDDING OUTLET	VAPOR	8.25"	2.3125"					0"	3/8		3/4	FULL	136
J	1	3"	300#	RF	STUDDING OUTLET	VAPOR	8.25"	2.3125"					0"	3/8		3/4	FULL	136
I	1	3"	300#	RF	STUDDING OUTLET	VAPOR	8.25"	2.3125"					0"	3/8		3/4	FULL	136
H	1	1/2" X 7"	3000#	THR'D	CPL'G	THERMOWELL	1.375"	.267"					3/4"		1/4	1/4		129
G	1	3/4"	6000#	THR'D	CPL'G	PRESSURE/LIQUID LEVEL	1.75"	.35"					3/8"		3/8	3/8		128
F	1	2 1/2"	3000#	THR'D	CPL'G	FLOAT/ROTARY GAUGE	3.625"	.375"					3/8"		3/8	3/8		127
E	1	1"	3000#	THR'D	CPL'G	INSPECTION	1.75"	.2175"					1/4"		1/4	1/4		140
D	1	4"	300#	RF	STUDDING OUTLET	SPRAYFILL W/ STANDPIPE	10.0"	3.0"					0"	3/8		3/4	FULL	131
C	1	3"	300#	RF	STUDDING OUTLET	LIQUID	8.25"	2.3125"					0"	3/8		3/4	FULL	136
B	1	4"	300#	RF	STUDDING OUTLET	LIQUID	10.0"	3.0"					0"	3/8		3/4	FULL	131
A1-A3	3	4"	300#	RF	STUDDING OUTLET	RELIEF	10.0"	3.0"					0"	3/8		3/4	FULL	131

TRANSTECH ENERGY
LPG & NGL STORAGE SOLUTIONS

TRANSTECH ENERGY LLC

MO NO. 50969 UNITS REQ'D. ONE

CUSTOMER: TRANSTECH ENERGY
P.O. NO. ZP0000009 ITEM # _____

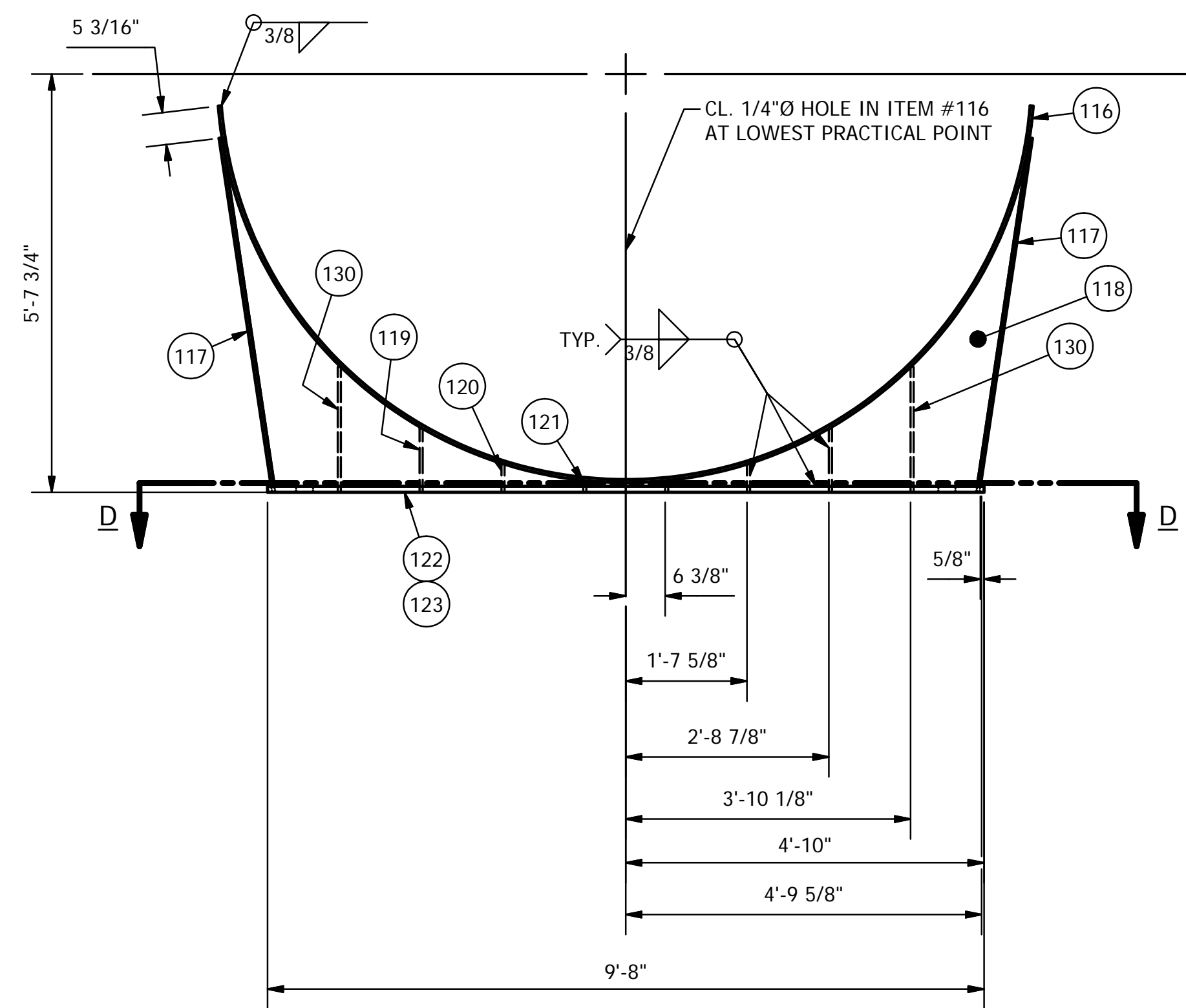
130" I.D. X 123'-6" SM/SM
90,000 W.G. CAP. LPG STORAGE TANK

DATE: 7/10/2017 DWG. NO. L10618 REV. 3

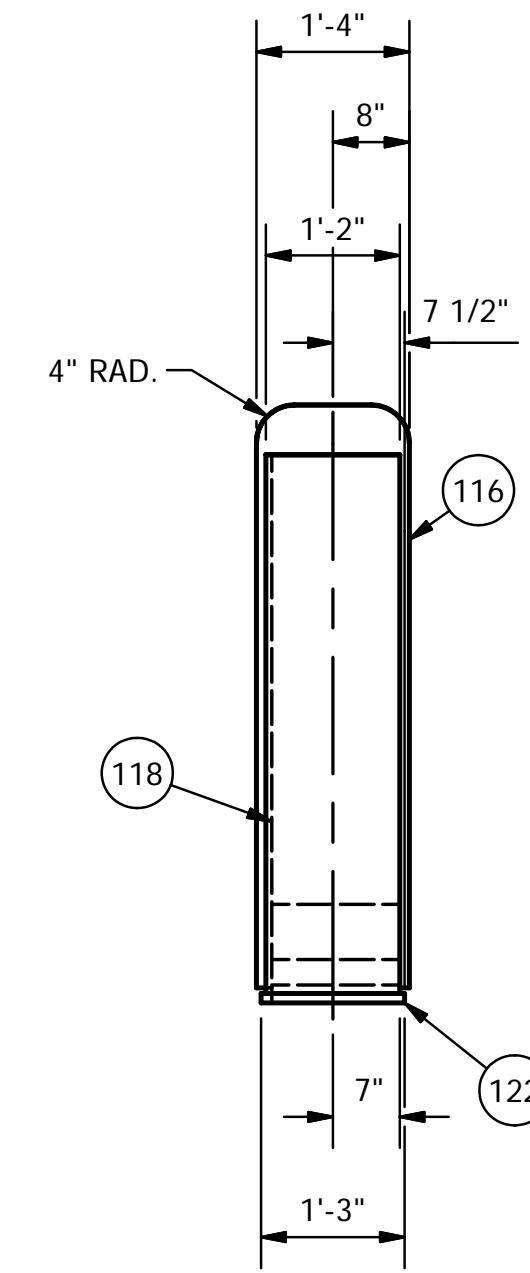
D = DOMESTIC MATERIAL; M = MILL TEST REPORT; A = APPROVED VENDOR LIST; R = RECORD; C = VENDOR CERTIFICATION OF DOMESTIC ORIGIN

DWN. BY: DATE: DWG. NO. L10618 REV. 3

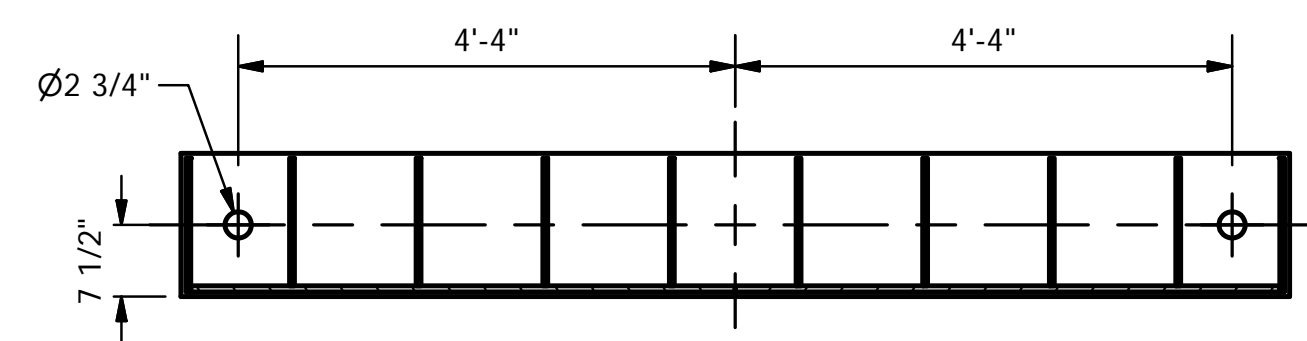
APPROVED BY: SCALE: N.T.S.



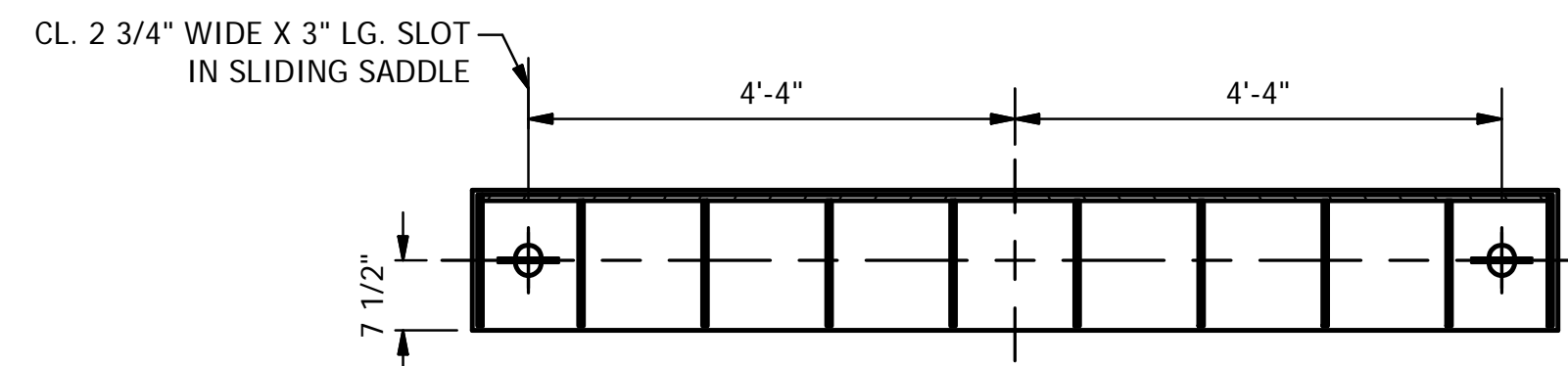
ELEVATION



TYP. SIDE VIEW



SECTION D-D
(FIXED SADDLE)



SECTION E-E
(SLIDING SADDLE)



REFERENCE DRAWINGS

MO NO. 50969 UNITS REQ'D. ONE

CUSTOMER
TRAN TECH ENERGY

P.O. NO. ZPO0000009 ITEM#

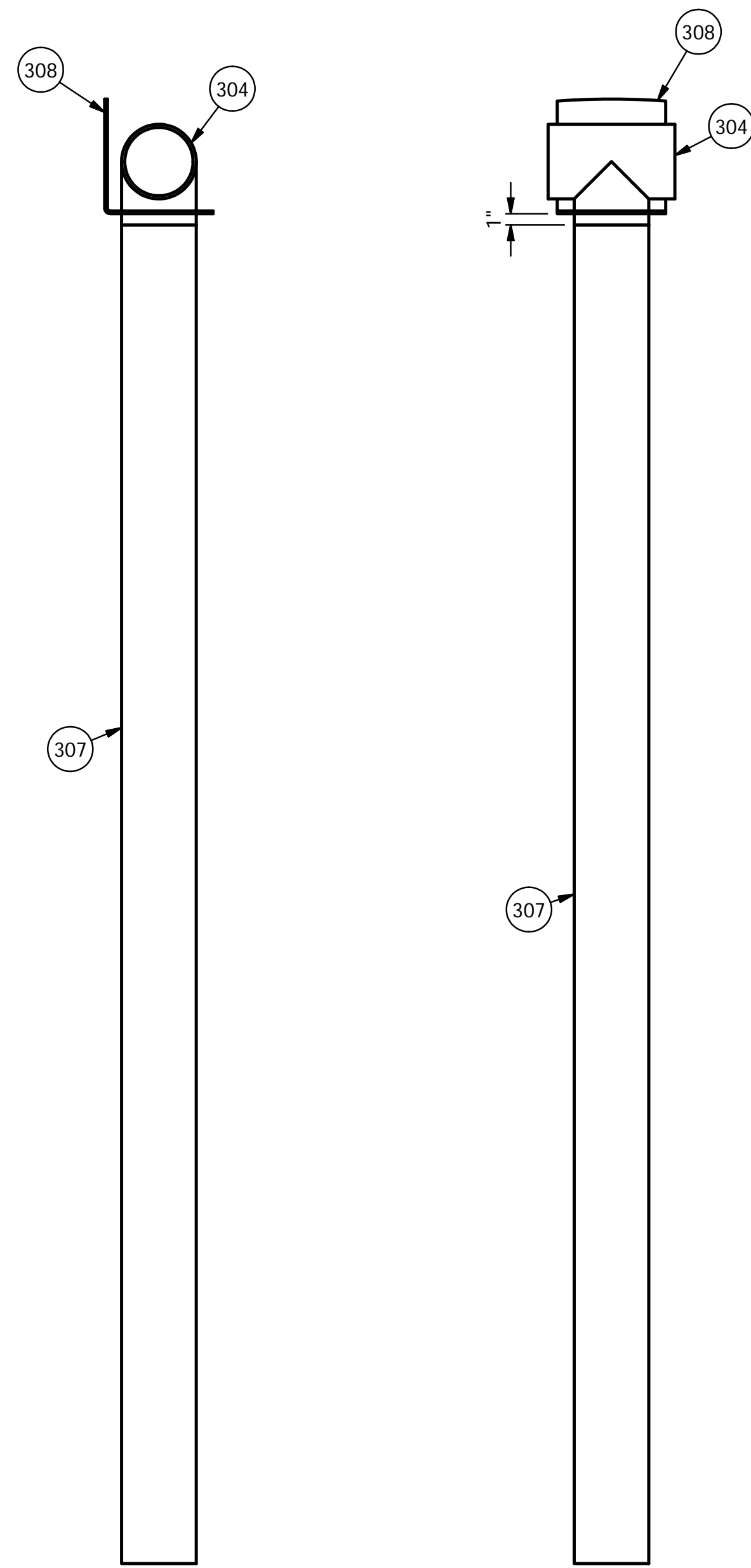
SADDLE DETAIL'S

DES.
D = DOMESTIC MATERIAL:
M = MILL TEST REPORT:
A = APPROVED VENDOR LIST:

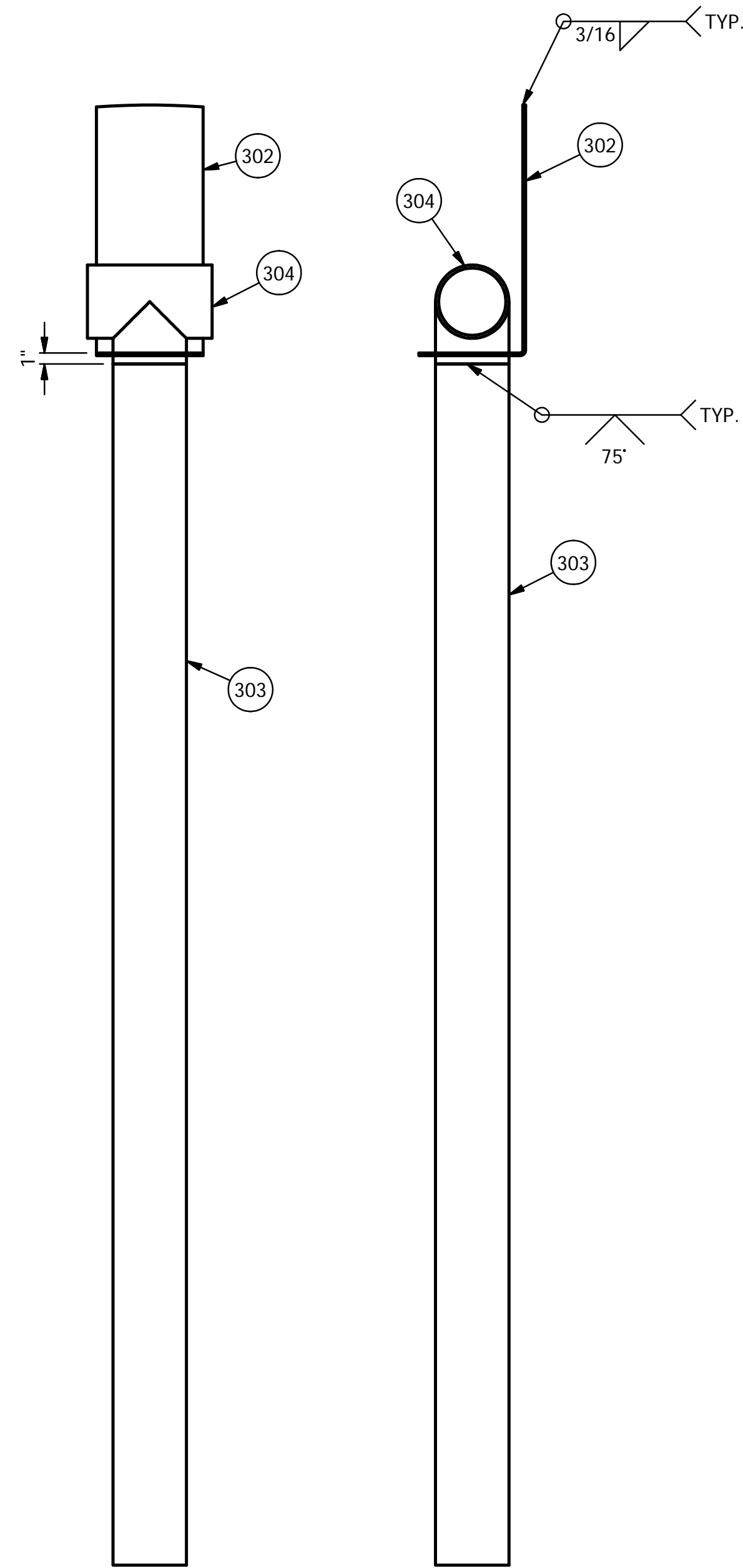
R = RECORD:
C = VENDOR CERTIFICATION:
OF DOMESTIC ORIGIN

DATE	DWG. NO.	REV.
7/10/2012	L10618	3
DWN. BY:	CKD. BY:	APPROVED BY:

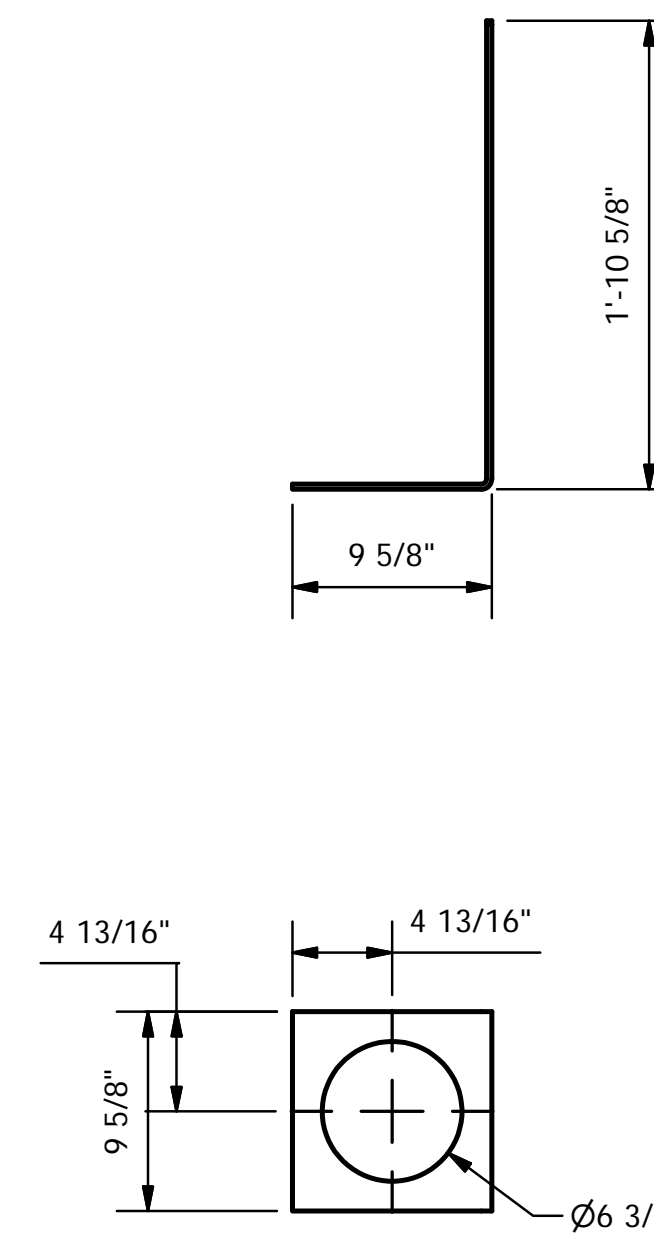
SCALE: N.T.S.



DET'L STANDPIPE @ "K"



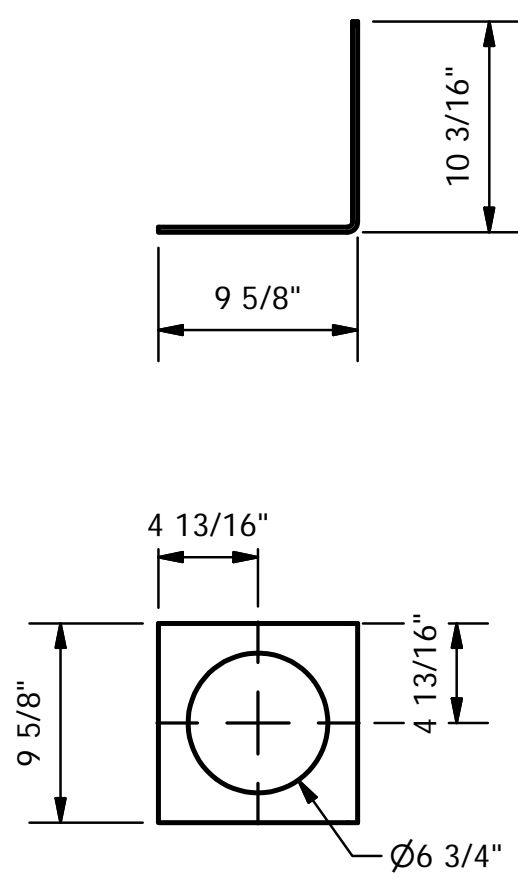
DET'L STANDPIPE @ "D"




DETAIL ITEM #302

NOTE: AIR TEST STANDPIPE PRIOR TO INSTALLATION
DO NOT WELD BRACKET TO STANDPIPE

ITEM	QTY	DESCRIPTION	MATERIAL	DES
308	1	1/4" X 9 5/8" PL. X 19 3/8" LG. (CUT & BEND PER DET'L)	SA-516 GR. 70	M
307	1	6" SCH. 40 (.280" WALL) PIPE X 118 3/4" LG.	SA-106-B	M
304	2	6" SCH. 40 (.280" WALL) B.W. TEE	SA-234-WPB	
303	1	6" SCH. 40 (.280" WALL) PIPE X 108 3/8" LG.	SA-106-B	
302	1	1/4" X 9 5/8" PL. X 31 13/16" LG. (CUT & BEND PER DET'L)	SA-516 GR. 70	M
BILL OF MATERIAL				



ITEM #308 DETAIL

 TRANSTECH ENERGY LPG & NGL STORAGE SOLUTIONS			
REFERENCE DRAWINGS			
MO NO. 50969		UNITS REQ'D. ONE	
CUSTOMER			
TRANSTECH ENERGY			
P.O. NO. ZPO0000009		ITEM#	
STANDPIPE DET'L			
DES.	DATE	DWG. NO.	REV.
D = DOMESTIC MATERIAL: M = MILL TEST REPORT: A = APPROVED VENDOR LIST:	R = RECORD: C = VENDOR CERTIFICATION: OF DOMESTIC ORIGIN	7/10/2012	L10618
DWN.BY:		3	
CKD.BY:		SCALE: N.T.S.	
APPROVED BY:			