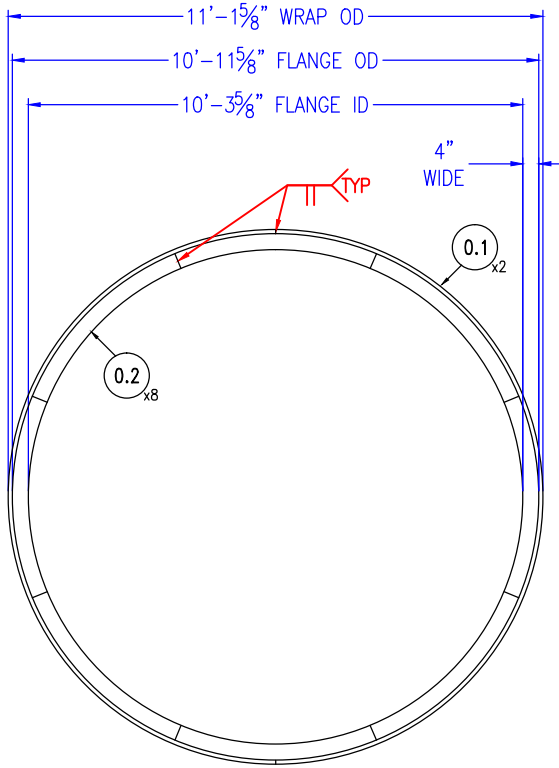


QUANTITY: 2 PER SET

FABRICATION DRAWING
FOR VESSEL:

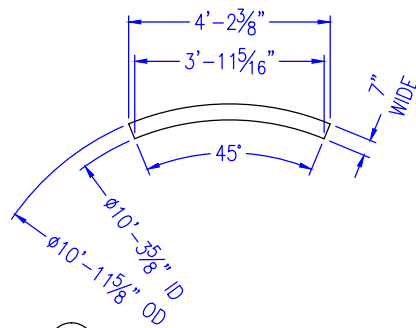
372-



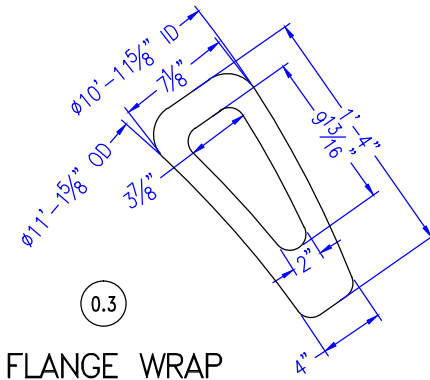
FRONT VIEW



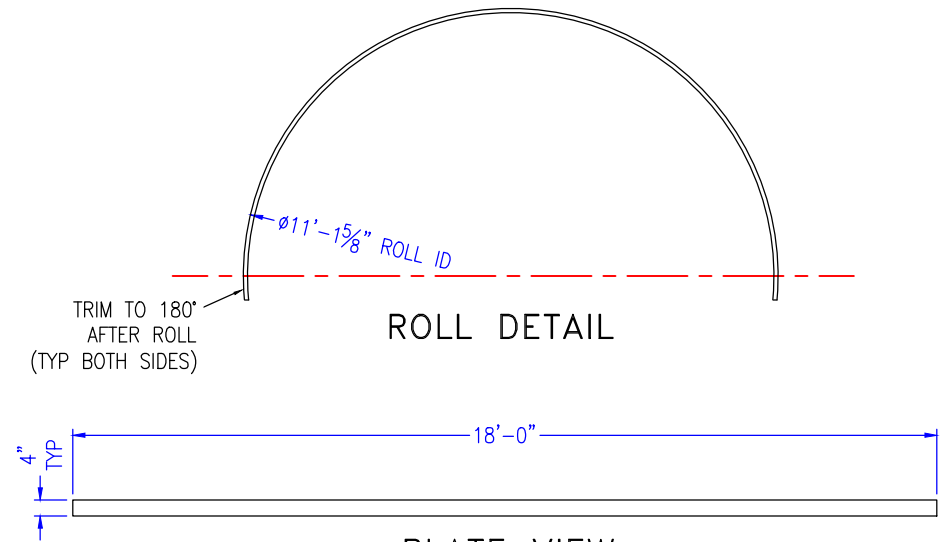
SIDE VIEW



0.2 FLANGE SEGMENT



0.3 FLANGE WRAP SWEEP DETAIL
not to scale



0.1 WRAP SEGMENT DETAIL

BILL OF MATERIALS				
*QTY	PART#	PART NAME	DESCRIPTION	MATERIAL
4	0.1	FLANGE WRAP	PL 1" THK x 4" x 18'-0"	CS
16	0.2	FLANGE SEGMENT	PL 1" THK x 10'-3 5/8" ID x 10'-11 5/8" OD x 45° BURNED SHAPE	CS
* QTY SHOWN IS FOR 1 SET = 2 DUMMY FLANGES = 1 VESSEL				

APPROVED FOR FABRICATION	
ENG. _____	DATE _____
Q.C. _____	DATE _____

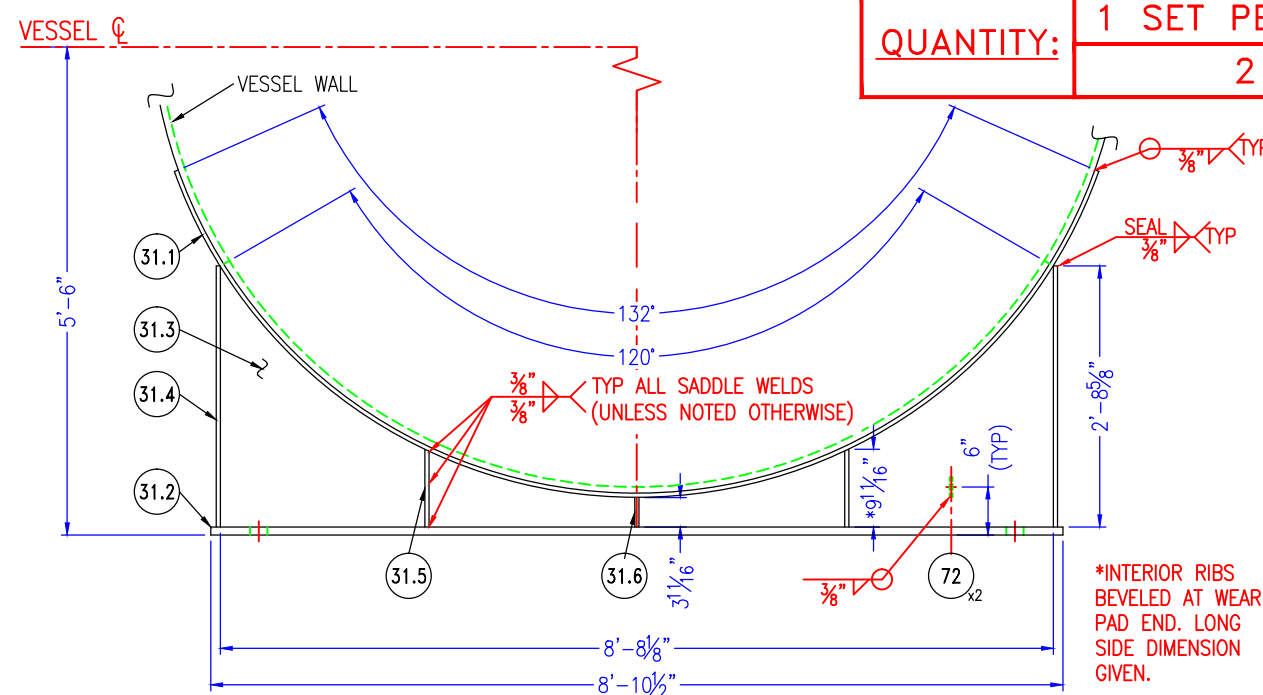
REVISIONS					
NO	DESCRIPTION	BY	DATE	CHK	DATE
0	RELEASED FOR FABRICATION	DC	12/10/13		

Tubular Structures International, L.L.C.	
	2201 JUDITH ROAD P.O. BOX 337 MCGREGOR, TEXAS 76657 TEL: 254-840-3355 FAX: 254-840-3358
CUSTOMER	TRANS TECH ENERGY
DESCRIPTION 10'-0" ID x 82'-6" S/S VESSEL (V-2389/2390) APPROX. 60,000 GAL PROPANE BULLET TANK (2 IDENT.) DUMMY FLANGE SUBASSEMBLY	
SCALE: 1/4" = 1'-0"	W.O. NO. --
DRAWN: DC	DATE: 12/10/13
CHKD: _____	CUSTOMER W.O. _____
DATE: _____	DWG. NO. 372-(1-2)
SHT SO	REV -0-

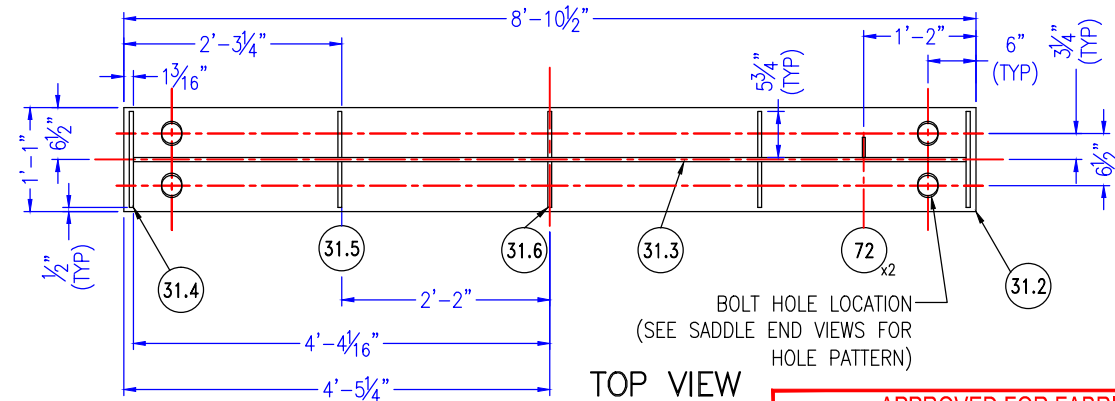
WEEP HOLE NOTE:
 DRILL & TAP 1/4" WEEP HOLE
 APPROXIMATELY 1" FROM EDGE IN
 REINFORCING PAD AT LOWEST POINT ON
 VESSEL FOR EACH PAD AND EACH
 SECTION OF PAD, AS APPLICABLE

QUANTITY: 1 SET PER VESSEL (SHOWN)
 2 SETS TOTAL

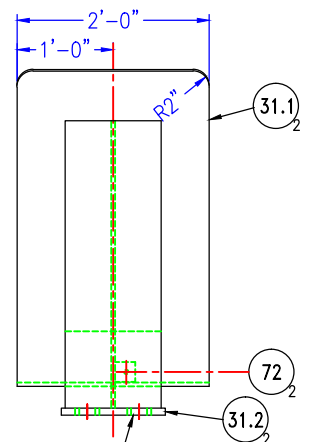
**FABRICATION DRAWING
 FOR VESSEL:**
372-



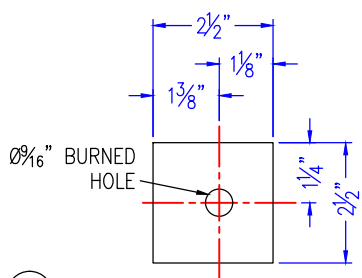
END VIEW



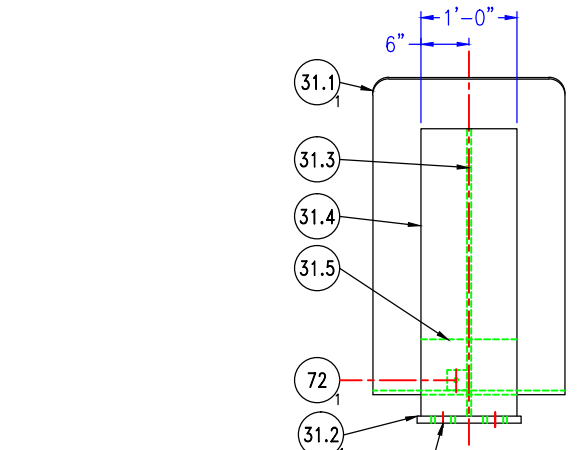
TOP VIEW



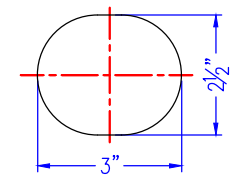
FIXED SADDLE ELEVATION VIEW



72x2 GROUND LUG DETAIL
 SCALE: 3" = 1'-0"



SLIDING SADDLE ELEVATION VIEW



ENLARGED VIEW OF SLOTTED HOLE
 SCALE: 3" = 1'-0"

BILL OF MATERIALS

*QTY	PART#	PART NAME	DESCRIPTION	MATERIAL
2	31.1	WEAR PAD	PL 1/2" THK x 2'-0" x 11'-8 11/16" [140.68"] ROLLED TO ø10'-1 5/8" ID	SA-516-70
2	31.2	BASEPLATE	PL 1" THK x 1'-1" x 8'-10 1/2" w/BURNED BOLT HOLES	SA-516-70
2	31.3	WEB	PL 1/2" THK x 8'-8 1/8" x 2'-8 5/8" BURNED SHAPE	SA-516-70
4	31.4	OUTSIDE RIB	PL 1/2" THK x 12" x 2'-8 5/8"	SA-516-70
8	31.5	MIDDLE RIB	PL 1/2" THK x 5 3/4" x 9 11/16"	SA-516-70
4	31.6	CENTER RIB	PL 1/2" THK x 5 3/4" x 3 11/16"	SA-516-70
ø2	72	GROUND LUG	PL 1/4" THK x 2 1/2" x 2 1/2"	SA-516-70

APPROVED FOR FABRICATION
 ENG. _____ DATE _____
 Q.C. _____ DATE _____

REVISIONS

NO	DESCRIPTION	BY	DATE	CHK	DATE
A	SUBMITTED FOR APPROVAL	WD	9/4/13		
B	RESUBMITTED FOR APPROVAL	WD	10/23/13		
C	RESUBMITTED FOR APPROVAL	DC	11/25/13		
D	RESUBMITTED FOR APPROVAL	DC	11/27/13		
E	REVISED BOLT HOLE	DC	12/5/13		
F	ADDED VESSEL NUMBERS PER CUSTOMER	DC	12/9/13		
O	RELEASED FOR FABRICATION	DC	12/10/13		

Tubular Structures International, L.L.C.



2201 JUDITH ROAD P.O. BOX 337
 MCGREGOR, TEXAS 76657
 TEL: 254-840-3355
 FAX: 254-840-3358

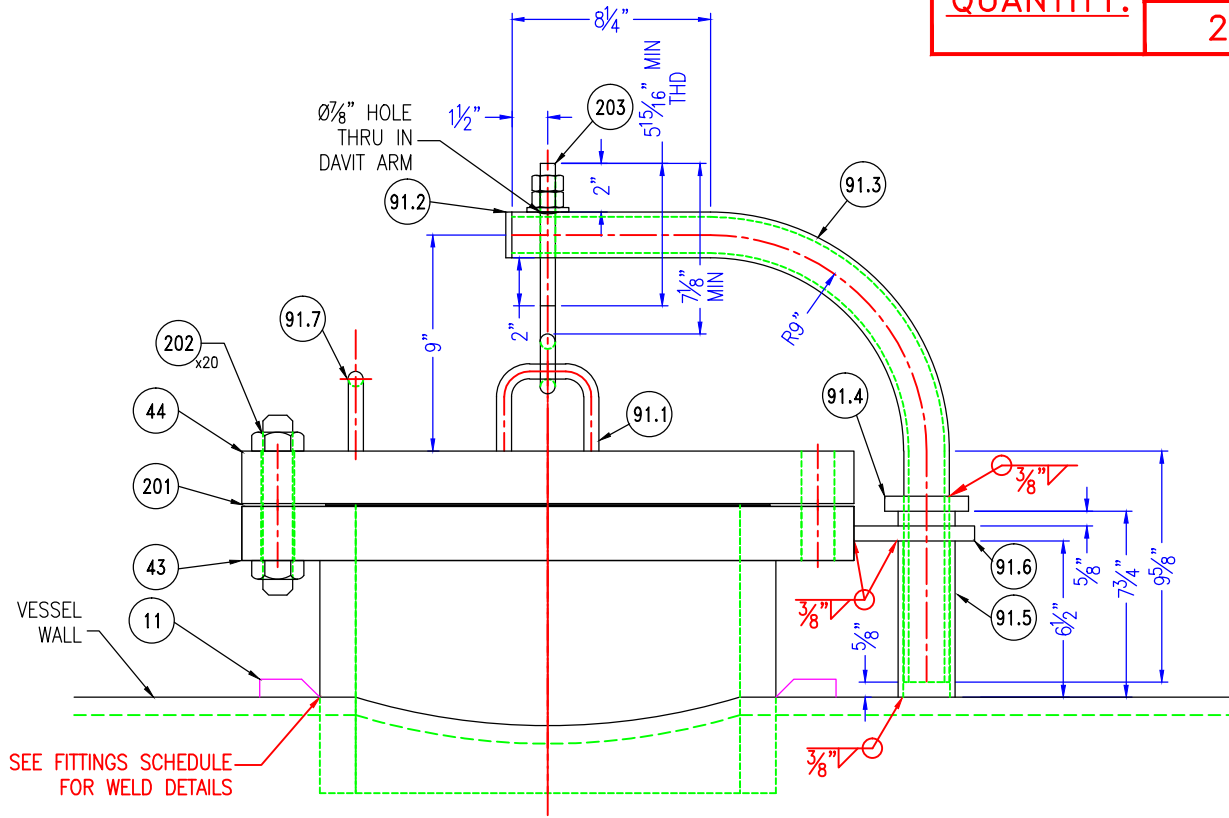
CUSTOMER **TRANS TECH ENERGY**

DESCRIPTION **10'-0" ID x 82'-6" S/S VESSEL (V-2389/2390)
 APPROX. 60,000 GAL PROPANE BULLET TANK (2 IDENT.)
 SADDLE PAIR SUBASSEMBLY**

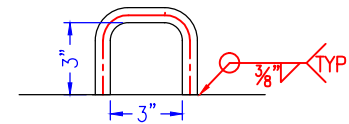
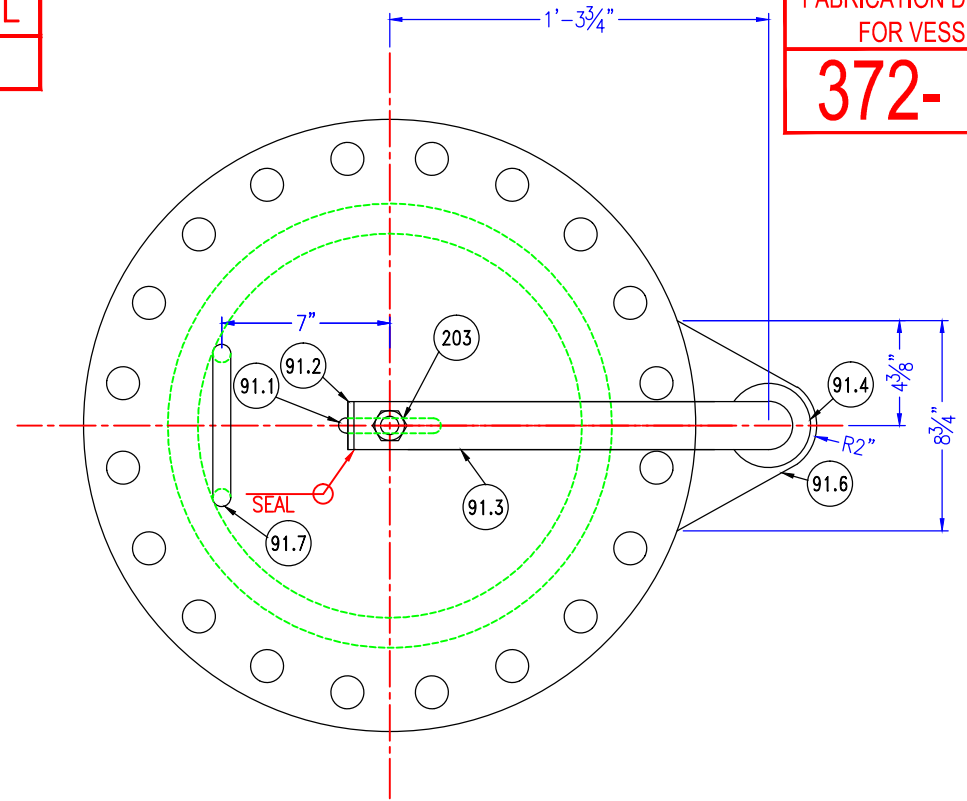
SCALE: 1/2" = 1'-0" W.O. NO. --
 DRAWN: DC | DATE: 12/10/13 | CUSTOMER W.O. --
 CHKD: _____ DWG. NO. **372-(1-2)** SHT **S31** REV **-0-**
 DATE: _____

QUANTITY: 1 PER VESSEL
2 TOTAL

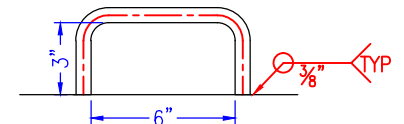
FABRICATION DRAWING FOR VESSEL:
372-



FRONT VIEW



91.1 DAVIT-BLIND U-RING DETAIL



91.7 HANDLE DETAIL

BILL OF MATERIALS

*QTY	PART#	PART NAME	DESCRIPTION	MATERIAL
◆1	43	FLANGE	Ø16" RFLWN 300# x 12" LG	SA-105
◆1	44	BLIND	Ø16" RF BLIND 300#	SA-105
◆1	11	MW REPAD	PL 3/4" THK x 31" OD x 24 1/8" ID ROLLED TO Ø10'-1 5/8" ID	SA-516-70
1	91.1	DAVIT-BLIND U-RING	Ø3/4" BAR x 10 5/16" LG HOT ROLLED	SA-36
1	91.2	DAVIT ARM CAP	PL 1/4" THK x 1 7/8" OD	SA-516-70
1	91.3	DAVIT ARM	Ø1 1/2" PIPE XH 0.200" WALL x 2'-7 5/8" LG HOT ROLLED TO 90°	SA-106-B
1	91.4	DAVIT ARM STOPPER	PL 5/8" THK x 3" OD x 2 1/16" ID	SA-516-70
1	91.5	DAVIT ARM SLEEVE	Ø2" PIPE XH 0.218" WALL x 7 3/4" LG	SA-106-B
1	91.6	DAVIT CONNECTOR PL	PL 5/8" THK x 5 13/16" x 8 3/4" BURNED SHAPE	SA-516-70
1	91.7	HANDLE	Ø3/4" BAR x 1'-1 3/8" LG HOT FORMED	SA-36
◆1	201	GASKET	Ø16" GASKET 300# x 1/8" THK	304 SS
◆20	202	STUD SET**	Ø1 1/4" x 7 1/2" LG STUD 8 THREAD SERIES 8UN	SA-193-B7/SA-194-2H
◆1	203	EYEBOLT SET**	Ø3/4" x 7 1/2" SHANK (SEE DWG FOR DIM REQ'D) w/2 NUTS AND 1 WASHER	CS

APPROVED FOR FABRICATION

ENG. _____ DATE _____

Q.C. _____ DATE _____

REVISIONS

NO	DESCRIPTION	BY	DATE	CHK	DATE
A	SUBMITTED FOR APPROVAL	WD	9/4/13		
B	RESUBMITTED FOR APPROVAL	WD	10/23/13		
C	RESUBMITTED FOR APPROVAL	DC	11/25/13		
D	RESUBMITTED FOR APPROVAL	DC	11/27/13		
O	RELEASED FOR FABRICATION	DC	12/10/13		

Tubular Structures International, L.L.C.

TSI 2201 JUDITH ROAD P.O. BOX 337
MCGREGOR, TEXAS 76657
TEL: 254-840-3355
FAX: 254-840-3358

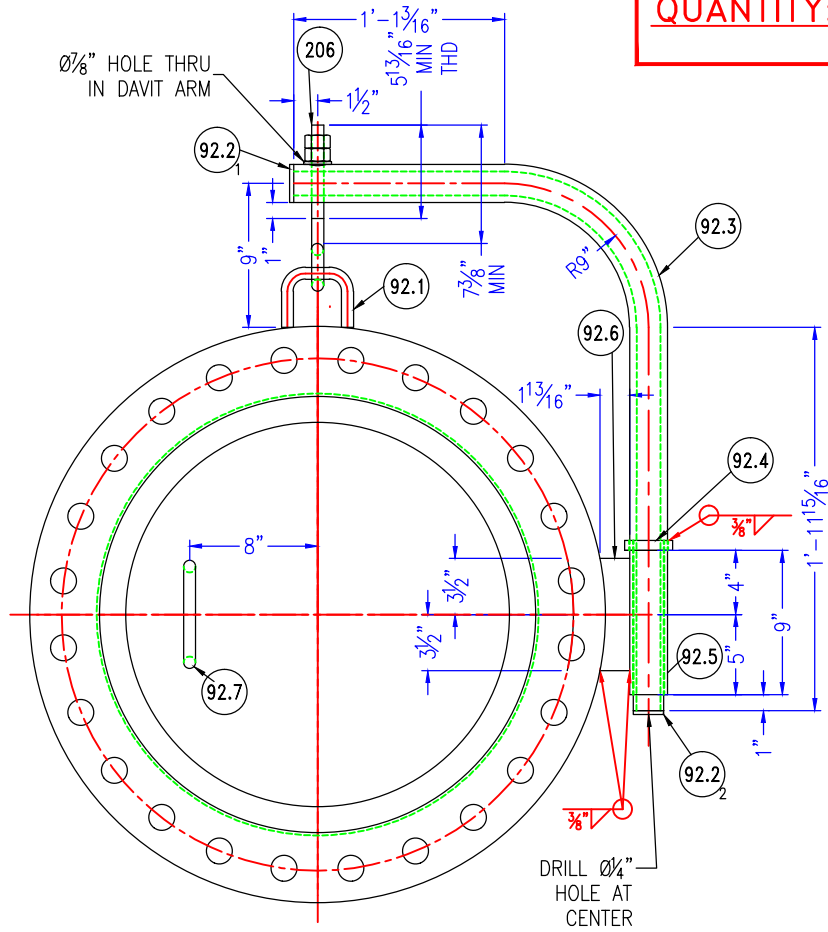
CUSTOMER TRANS TECH ENERGY

DESCRIPTION 10'-0" ID x 82'-6" S/S VESSEL (V-2389/2390)
APPROX. 60,000 GAL PROPANE BULLET TANK (2 IDENT.)
16" MANWAY w/BLIND & DAVIT SUBASSEMBLY

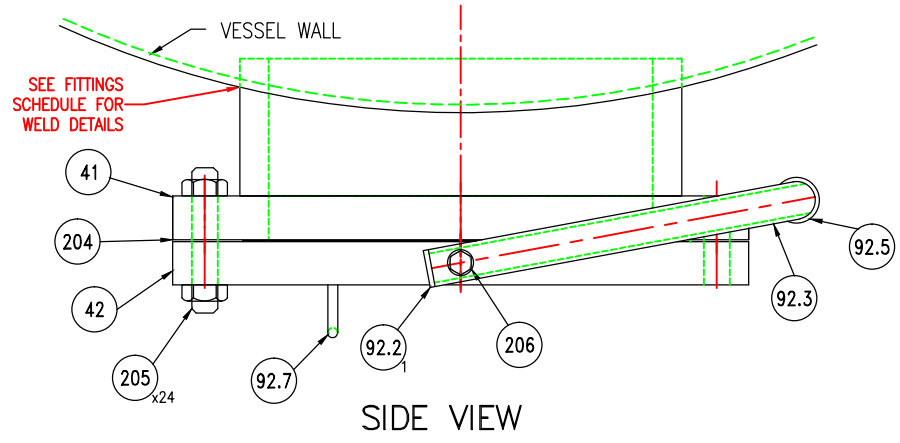
SCALE: 1 1/2" = 1'-0" W.O. NO. --
DRAWN: DC DATE: 12/10/13 CUSTOMER W.O. --
CHKD: DWG. NO. 372-(1-2) SHT S91 REV -0-

**QUANTITY: 1 PER VESSEL
2 TOTAL**

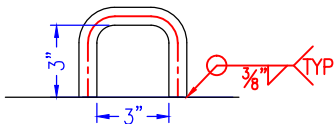
**FABRICATION DRAWING
FOR VESSEL:
372-**



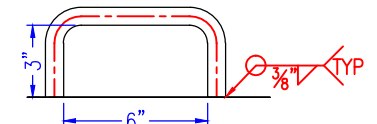
FRONT VIEW



SIDE VIEW



92.1 DAVIT-BLIND U-RING DETAIL



92.7 HANDLE DETAIL

BILL OF MATERIALS

*QTY	PART#	PART NAME	DESCRIPTION	MATERIAL
◆1	41	FLANGE	Ø24" RFLWN 300# x 12" LG	SA-105
◆1	42	BLIND	Ø24" RF BLIND 300#	SA-105
1	92.1	DAVIT-BLIND U-RING	Ø3/4" BAR x 10 3/4" LG HOT ROLLED	SA-36
2	92.2	DAVIT ARM CAP	PL 1/4" THK x 2 3/8" OD	SA-516-70
1	92.3	DAVIT ARM	Ø2" PIPE XXH 0.436" WALL x 4'-5 1/8" LG HOT ROLLED TO 90°	SA-106-B
1	92.4	DAVIT ARM STOPPER	PL 3/4" THK x 3" OD x 1 13/16" ID	SA-516-70
1	92.5	DAVIT ARM SLEEVE	Ø2 1/2" PIPE S/40 0.203" WALL x 9" LG	SA-106-B
1	92.6	DAVIT CONNECTOR PL	PL 3/4" THK x 2 3/16" x 7" BURNED SHAPE	SA-516-70
1	92.7	HANDLE	Ø3/4" BAR x 1'-1 3/4" LG HOT FORMED	SA-36
◆1	204	GASKET	Ø24" GASKET 300# x 1/8" THK	304 SS
◆24	205	STUD SET**	Ø1 1/2" x 9" LG STUD 8 THREAD SERIES 8UN	SA-193-B7/SA-194-2H
◆1	206	EYEBOLT SET**	Ø3/4" x 7 1/2" SHANK (SEE DWG FOR DIM REQ'D) w/2 NUTS AND 1 WASHER	CS

APPROVED FOR FABRICATION

ENG. _____ DATE _____

Q.C. _____ DATE _____

REVISIONS

NO	DESCRIPTION	BY	DATE	CHK	DATE
A	SUBMITTED FOR APPROVAL	WD	9/4/13		
B	RESUBMITTED FOR APPROVAL	WD	10/23/13		
C	RESUBMITTED FOR APPROVAL	DC	11/25/13		
D	RESUBMITTED FOR APPROVAL	DC	11/27/13		
O	RELEASED FOR FABRICATION	DC	12/10/13		

Tubular Structures International, L.L.C.

2201 JUDITH ROAD P.O. BOX 337
MCGREGOR, TEXAS 76657
TEL: 254-840-3355
FAX: 254-840-3358

CUSTOMER: **TRANS TECH ENERGY**

DESCRIPTION: 10'-0" ID x 82'-6" S/S VESSEL (V-2389/2390)
APPROX. 60,000 GAL PROPANE BULLET TANK (2 IDENT.)
24" MANWAY w/BLIND & DAVIT SUBASSEMBLY

SCALE: NTS W.O. NO. --

DRAWN: DC DATE: 12/10/13 CUSTOMER W.O. --

CHKD: DWG. NO. 372-(1-2) SHT S92 REV -0-